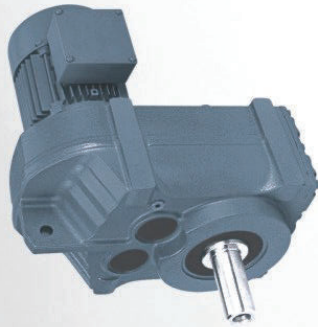
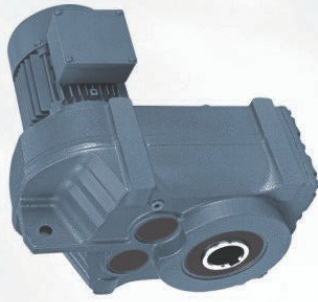


EF 系列(图片) Type of EF series (pictures)



EF



EFA



EFF



EFAF

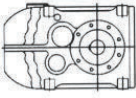
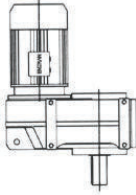
结构型式说明 Dimensional Description

EF 系列各轴之间的几何位置都为平行关系,因而亦称为平行轴系列。由两级或三级斜齿轮构成。

Shafts of EF series geared motors are all parallel to each other. Units of EF series all consist of two or three stages helical gears.

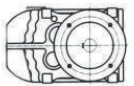
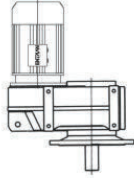
1. EF 型: 底座安装, 输出轴为实心轴。

Type EF: Foot mounted. Solid output shaft.



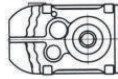
2. EFF 型: B5 法兰安装, 输出轴为实心轴。

Type EFF: B5 flange mounted. Solid output shaft.



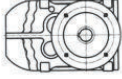
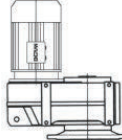
3. EFA 型: 轴装式, 输出轴为空心轴。

Type EFA: Shaft mounted. Hollow output shaft.



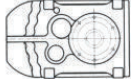
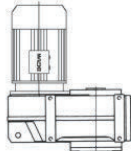
4. EFAF 型: B5 法兰安装, 输出轴为空心轴。

Type EFAF: B5 flange mounted. Hollow output shaft.



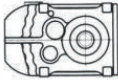
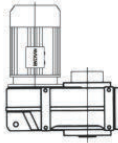
5. EFAZ 型: B14 法兰空心轴安装。

Type EFAZ: B14 flange mounted version with hollow shaft



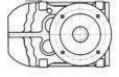
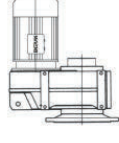
6. EFH 型: 空心轴锁紧盘安装。

Type EFH: Hollow shaft and shrink disk mounted.



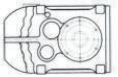
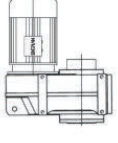
7. EFHF 型: B5 法兰空心轴锁紧盘安装。

Type EFHF: B5 flange mounted version with hollow shaft and shrink disk



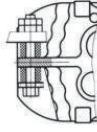
8. EFHZ 型: B14 法兰空心轴锁紧盘安装。

Type EFHZ: B14 flange mounted version with hollow shaft and shrink disk.



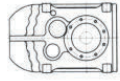
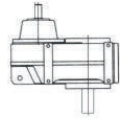
9. EFAT/EFHT 型: 即在 EFA/EFH 型上增加防转臂等附件后的派生型。

Type EFAT/EFHT: As altered type from type EFA/EFH, this type is added torque arm and other accessories.



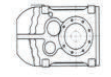
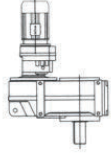
10. EF..SZ..AD.. 型: 输入轴型。

Type EF..SZ..AD..: Input shaft types.

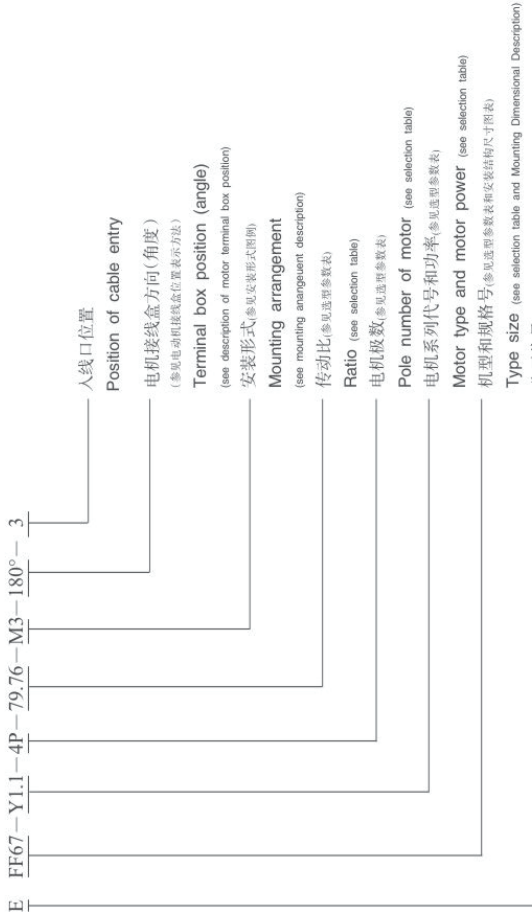


11. EF...R 型: EF 系列和 ER 系列的组合。

Type EF...R: Combined types of type EF and type ER.



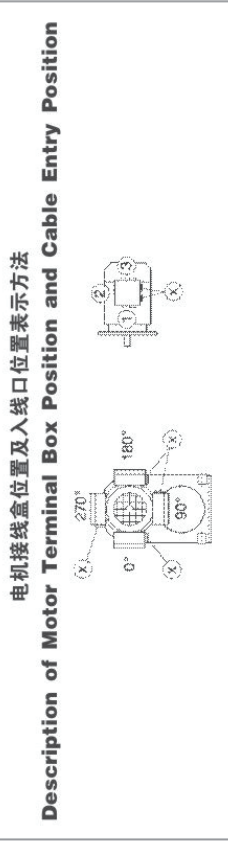
EF 系列机型号表示方法 Type Expression of EF Series



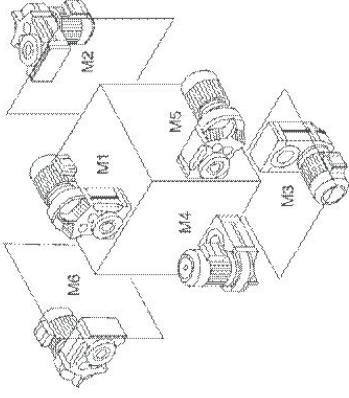
- 注: 1. 需带联接法兰时请注明。
2. 输入轴型没有电动机各项内容。
3. 不注明接线盒方向时, 则默认为安装形式中的 0 度位置。不注明入线口位置时, 则默认为 X 位置。
4. 对输出轴旋转方向和输入轴旋转方向有特别要求的用户, 请与技术部联系, 并在订货时用简图或文字说明。

Note: 1. Please make a note, if it needs connecting flange.
2. Contents of motors for input shaft types are not listed.
3. Degree=0°, if terminal box position is not mentioned. It is X, if cable entry position is not mentioned.
4. If specific rotation directions of output shaft or/and input shaft are specially requested, please contact our technology department, and make detailed description while placing order.

**电机接线盒位置及入线口位置表示方法
Description of Motor Terminal Box Position and Cable Entry Position**



安装形式图例



Mounting Arrangements Description

Different kinds of mounting arrangements are defined as following:
M1—motor is vertically mounted downwards.
M2—motor is vertically mounted upwards.
M3—motor is horizontally mounted downwards.
M4—motor is horizontally mounted upwards.
M5—horizontally mounted motor, if placed on M1 position, left side of unit turns to bottom (view point: towards from motor side).
M6—horizontally mounted motor, if placed on M1 position, left side of unit turns to top (view point: towards from motor side).

各种安装形式定义为:
M1—电机水平放置; 减速机底部朝下。
M2—电机朝上。
M3—电机水平放置; 减速机底部朝上。
M4—电机朝下。
M5—电机水平放置; 当减速机在 M1 安装位置时, 从电机方向看, 减速机的左面旋转到下方位置。
M6—电机水平放置; 当减速机在 M1 安装位置时, 从电机方向看, 减速机的左面旋转到上方位置。

减速机重量 (Gear unit weight)

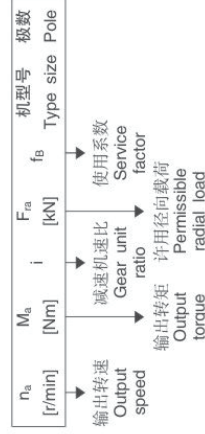
规格 Size	EF37	EF47	EF57	EF67	EF77	EF87	EF97	EF107	EF127	EF157
重量(kg) Weight	15	20	31	35	67	117	195	305	720	950

注: 重量为平均值, 不包括电机, 仅供参考。

(Note: The weights mean values without the motor, only for reference.)

选型表注释 Description of selection table

恒功率 Constant power



恒转矩 Constant torque



选型参数表
(恒功率)

选型参数表 (恒功率)		Selection Table (Constant Power)				
n_a [r/min]	M_a [Nm]	i	F_{ra} [kN]	f_b	机型号 Type size	极数 Pole
0.12kW						
0.06	17598	22289	80	0.80	EFA127R77	4P
0.07	15015	19018	85	0.85	EFA127R77	4P
0.08	13130	16630	86	0.95	EFA127R77	4P
0.09	11473	14532	86	1.10	EFA127R77	4P
0.10	10312	13061	86	1.25	EFA127R77	4P
0.11	9308	11790	86	1.35	EFA127R77	4P
0.13	8093	10251	86	1.55	EFA127R77	4P
0.09	11678	14791	42	0.80	EFA57R37	4P
0.11	9027	11433	48	0.90	EFA57R37	4P
0.13	7939	10055	52	1.05	EFA57R37	4P
0.15	6760	8562	54	1.25	EFA57R37	4P
0.17	6094	7719	54	1.35	EFA57R37	4P
0.19	5351	6778	55	1.55	EFA57R37	4P
0.22	4709	5964	56	1.75	EFA57R37	4P
0.25	4147	5253	57	2.00	EFA57R37	4P
0.31	3291	4333	58	2.30	EFA57R37	4P
0.37	2796	3541	59	3.00	EFA57R37	4P
0.18	5786	7328	29	0.80	EFA47R17	4P
0.20	5107	6469	29	0.90	EFA47R17	4P
0.23	4433	5615	30	1.00	EFA47R17	4P
0.26	3917	4961	31	1.15	EFA47R17	4P
0.30	3421	4333	32	1.35	EFA47R17	4P
0.34	3084	3906	33	1.50	EFA47R17	4P
0.39	2646	3352	33	1.70	EFA47R17	4P
0.45	2295	2907	34	2.00	EFA47R17	4P
0.51	2016	2553	34	2.25	EFA47R17	4P
0.26	3911	4954	20	0.80	EFA37R17	4P
0.31	3351	4245	23	0.95	EFA37R17	4P
0.35	2938	3721	25	1.10	EFA37R17	4P
0.40	2561	3244	25	1.25	EFA37R17	4P
0.45	2275	2881	25	1.40	EFA37R17	4P
0.51	2034	2576	26	1.55	EFA37R17	4P
0.60	1736	2199	27	1.85	EFA37R17	4P
0.68	1524	1930	27	2.10	EFA37R17	4P
0.77	1349	1709	27	2.35	EFA37R17	4P
0.88	1179	1493	28	2.70	EFA37R17	4P
1.0	1026	1300	28	3.10	EFA37R17	4P
1.1	906	1148	28	3.50	EFA37R17	4P
0.50	2063	2613	13	0.85	EFA67R37	4P
0.57	1803	2284	15	0.90	EFA67R37	4P
0.65	1602	2029	16	1.00	EFA67R37	4P
0.76	1364	1728	17	1.15	EFA67R37	4P
0.85	1219	1544	17	1.30	EFA67R37	4P
0.97	1069	1354	18	1.50	EFA67R37	4P
1.1	947	1200	18	1.70	EFA67R37	4P
1.2	831	1053	18	1.90	EFA67R37	4P
1.4	718	910	19	2.20	EFA67R37	4P
1.6	640	810	19	2.50	EFA67R37	4P
1.8	561	710	19	2.85	EFA67R37	4P
0.92	1128	1429	8.8	0.80	EFA47R17	4P
1.0	1003	1271	10	0.85	EFA47R17	4P
1.2	870	1102	11	1.00	EFA47R17	4P
1.4	766	970	11	1.15	EFA47R17	4P
1.5	677	858	12	1.30	EFA47R17	4P
1.7	596	755	12	1.45	EFA47R17	4P
2.0	506	641	12	1.70	EFA47R17	4P
2.3	452	572	12	1.90	EFA47R17	4P
2.6	402	509	12	2.15	EFA47R17	4P
3.0	345	437	12	2.50	EFA47R17	4P

选型参数表
(恒功率)

选型参数表 (恒功率)		Selection Table (Constant Power)				
n_a [r/min]	M_a [Nm]	i	F_{ra} [kN]	f_b	机型号 Type size	极数 Pole
0.12kW						
10	107	128.51	5.0	1.85	EFA127R77	4P
11	98	117.88	5.0	2.00	EFA127R77	4P
13	83	100.36	5.1	2.40	EFA127R77	4P
15	72	86.53	5.1	2.80	EFA127R77	4P
16	67	80.65	5.2	3.00	EFA127R77	4P
19	59	70.50	5.2	3.40	EFA127R77	4P
20	55	66.09	5.2	3.60	EFA127R77	4P
22	48	58.32	5.2	4.10	EFA127R77	4P
24	45	54.54	5.2	4.40	EFA127R77	4P
25	43	51.70	5.2	4.70	EFA127R77	4P
28	39	47.02	5.2	5.10	EFA127R77	4P
30	36	43.83	5.2	5.50	EFA127R77	4P
34	32	38.31	5.2	6.30	EFA127R77	4P
36	30	35.91	5.2	6.70	EFA127R77	4P
41	26	31.69	5.2	7.60	EFA127R77	4P
47	23	28.09	5.2	8.60	EFA127R77	4P
55	20	23.88	5.0	10	EFA127R77	4P
55	20	23.63	5.0	10	EFA127R77	4P
64	17	20.57	4.8	12	EFA127R77	4P
68	16	19.27	4.7	13	EFA127R77	4P
77	14	17.03	4.5	14	EFA127R77	4P
83	13	15.81	4.4	15	EFA127R77	4P
91	12	14.33	4.3	17	EFA127R77	4P
102	11	12.87	4.1	19	EFA127R77	4P
118	9	11.08	3.9	21	EFA127R77	4P
126	9	10.42	3.8	21	EFA127R77	4P
146	7	8.97	3.7	24	EFA127R77	4P
176	6	7.44	3.4	33	EFA127R77	4P
194	6	6.74	3.3	35	EFA127R77	4P
217	5	6.05	3.2	37	EFA127R77	4P
251	4	5.21	3.1	50	EFA127R77	4P
267	4	4.90	3.0	50	EFA127R77	4P
310	4	4.22	2.9	31	EFA127R77	4P
0.18kW						
0.10	15272	12896	83	0.80	EFA127R77	4P
0.11	13787	11642	86	0.90	EFA127R77	4P
0.13	12140	10251	86	1.05	EFA127R77	4P
0.15	10443	8818	86	1.20	EFA127R77	4P
0.17	9105	7688	86	1.40	EFA127R77	4P
0.19	8020	6772	86	1.60	EFA127R77	4P
0.15	10140	8362	46	0.80	EFA107R77	4P
0.17	9141	7719	46	0.90	EFA107R77	4P
0.19	8027	6778	49	1.05	EFA107R77	4P
0.22	7063	5964	51	1.15	EFA107R77	4P
0.25	6221	5253	53	1.35	EFA107R77	4P
0.29	5425	4581	54	1.55	EFA107R77	4P
0.37	4194	3541	56	2.00	EFA107R77	4P
0.43	3603	3042	57	2.30	EFA107R77	4P
0.47	3270	2761	58	2.55	EFA107R77	4P
0.55	2810	2373	58	2.95	EFA107R77	4P
0.63	2453	2071	59	3.40	EFA107R77	4P
0.30	5131	4333	27	0.90	EFA97R57	4P
0.34	4626	3906	29	1.00	EFA97R57	4P
0.39	3970	3352	31	1.30	EFA97R57	4P
0.45	3443	2907	31	1.50	EFA97R57	4P
0.51	3023	2553	32	1.50	EFA97R57	4P
0.58	2659	2245	33	1.70	EFA97R57	4P
0.66	2333	1970	33	1.95	EFA97R57	4P
0.76	2039	1722	34	2.20	EFA97R57	4P
0.86	1808	1527	34	2.50	EFA97R57	4P
0.99	1572	1327	35	2.90	EFA97R57	4P
1.1	1387	1171	35	3.30	EFA97R57	4P
0.45	3412	2881	12	0.95	EFA57R37	4P
0.51	3051	2576	12	1.05	EFA57R37	4P
0.60	2604	2199	12	1.20	EFA57R37	4P
0.68	2286	1930	12	1.40	EFA57R37	4P
0.77	2024	1709	12	1.60	EFA57R37	4P
0.88	1768	1493	12	1.80	EFA57R37	4P
1.0	1540	1300	12	2.05	EFA57R37	4P
1.1	1360	1148	12	2.35	EFA57R37	4P
1.3	1196	1010	12	2.65	EFA57R37	4P
1.5	1050	887	12	3.00	EFA57R37	4P
1.7	924	780	12	3.45	EFA57R37	4P
0.76	2046	1728	7.4	0.80	EFA47R17	4P
0.85	1829	1544	13	0.85	EFA47R17	4P
1.0	1604	1354	13	1.00	EFA47R17	4P
1.1	1421	1200	16	1.10	EFA47R17	4P
1.2	1247	1053	17	1.30	EFA47R17	4P
1.4	1078	910	17	1.50	EFA47R17	4P
1.6	959	810	18	1.65	EFA47R17	4P
1.8	841	710	18	1.90	EFA47R17	4P
2.1	728	615	18	2.20	EFA47R17	4P
1.5	1016	858	8.9	0.85	EFA67R37	4P
1.7	894	755	10	0.95	EFA67R37	4P
2.0	759	641	11	1.15	EFA67R37	4P
2.3	677	572	11	1.30	EFA67R37	4P
2.6	603	509	12	1.45	EFA67R37	4P
3.0	518	437	12	1.70	EFA67R37	4P
3.4	455	384	12	1.90	EFA67R37	4P
2.6	592	500	11	1.45	EFA67R37	4P
2.9	538	454	12	1.60	EFA67R37	4P
3.3	464	392	12	1.85	EFA67R37	4P
3.9	394	333	12	2.20	EFA67R37	4P
4.4	352	297	12	2.50	EFA67R37	4P
5.0	309	261	12	2.80	EFA67R37	4P
5.5	282	238	12	3.10	EFA67R37	4P
6.6	237	200	12	3.65	EFA67R37	4P
2.3	661	558	8.6	0.95	EFA57R37	4P
2.6	599	506	9.1	1.05	EFA57R37	4P
2.9	535	452	10	1.		

选型参数表
(恒功率)

Selection Table
(Constant Power)

n_a [r/min]	M_a [Nm]	i	F_{ra} [kN]	f_b	机型号 Type size	极数 Pole
0.18kW						
3.7	440	228.99	12	1.80	EFA67	6P
4.4	375	195.39	12	2.10	EF67	6P
5.0	328	170.85	12	2.40	EFF67	6P
5.7	285	228.99	12	2.80	EFA67	4P
6.7	244	195.39	12	3.20	EF67	4P
7.7	213	170.85	12	3.70	EFF67	4P
4.3	384	199.70	10	1.50	EF67	6P
4.6	353	183.60	10	1.65	EFA57	6P
5.4	302	157.09	11	1.95	EF67	6P
6.2	262	136.16	11	2.20	EF67	6P
6.7	245	127.27	11	2.40	EFF67	6P
7.7	211	110.01	11	2.80	EF67	6P
6.6	249	199.70	11	2.30	EFA57	4P
7.1	229	183.60	11	2.50	EF67	4P
8.3	196	157.09	11	2.90	EF67	4P
9.6	170	136.16	11	3.40	EFF67	4P
10.3	159	127.27	11	3.60	EF67	4P
4.5	366	190.76	9	1.05	EFA47	6P
4.8	337	175.38	6.3	1.15	EF47	6P
5.7	288	150.06	6.7	1.35	EF47	6P
6.5	250	130.07	7.0	1.55	EFF47	6P
7.0	234	121.57	7.2	1.65	EF47	6P
6.9	238	190.76	7.1	1.60	EFA47	4P
7.5	219	175.38	7.2	1.75	EF47	4P
8.7	187	150.06	7.4	2.00	EF47	4P
10.1	162	130.07	7.5	2.40	EFF47	4P
10.8	152	121.57	7.6	2.50	EF47	4P
7.2	226	177.88	3.6	0.85	EFA37	6P
8.5	193	100.36	4.1	1.00	EFA37	6P
10	166	86.53	4.4	1.15	EF37	6P
11	155	80.65	4.6	1.25	EF37	6P
12	135	70.50	4.7	1.45	EFF37	6P
10	160	128.51	4.5	1.20	EFA37	4P
11	147	117.88	4.6	1.30	EF37	4P
13	125	100.36	4.8	1.55	EF37	4P
15	108	86.53	4.9	1.75	EFF37	4P
16	101	80.65	5.0	1.90	EF37	4P
19	88	70.50	5.0	2.20	EF37	4P
20	82	66.09	5.1	2.30	EFA37	4P
22	73	58.32	5.1	2.60	EF37	4P
24	68	54.54	5.1	2.80	EF37	4P
25	64	51.70	5.1	3.00	EFF37	4P
28	59	47.02	5.2	3.30	EF37	4P
30	55	43.83	5.2	3.50	EF37	4P
34	48	38.31	5.2	4.00	EF37	4P
36	45	35.91	5.2	4.30	EF37	4P
41	40	31.69	5.2	4.80	EF37	4P
47	35	28.09	5.2	5.50	EF37	4P
55	30	23.88	5.0	6.40	EF37	4P
55	29	23.63	5.0	6.50	EF37	4P
64	26	20.57	4.8	7.50	EF37	4P
68	24	19.27	4.7	8.00	EF37	4P
77	21	17.03	4.5	9.00	EF37	4P
83	20	15.81	4.4	9.70	EF37	4P
91	18	14.33	4.3	11	EF37	4P
102	16	12.87	4.1	12	EFA37	4P
118	14	11.08	3.9	13	EFA37	4P
126	13	10.42	3.9	14	EF37	4P
146	11	8.97	3.7	15	EF37	4P
176	9.3	7.44	3.5	15	EFF37	4P
194	8.4	6.74	3.4	16	EF37	4P
217	7.5	6.05	3.2	17	EF37	4P
251	6.1	5.21	3.1	18	EF37	4P
267	6.1	4.90	3.0	19	EF37	4P
310	5.3	4.22	2.9	20	EF37	4P

选型参数表
(恒功率)

Selection Table
(Constant Power)

n_a [r/min]	M_a [Nm]	i	F_{ra} [kN]	f_b	机型号 Type size	极数 Pole
0.25kW						
5.3	403	249	5.7	1.00	EFA47R17	4P
6.1	353	218	6.3	1.15	EFA47R17	4P
6.9	313	193	6.7	1.30	EF47R17	4P
7.6	284	175	6.9	1.45	EFF47R17	4P
5.3	410	253	5.6	1.00	EFA47R17	4P
6.1	352	217	6.2	1.20	EFA47R17	4P
7.0	308	190	6.6	1.35	EFA47R17	4P
7.5	288	178	6.8	1.45	EF47R17	4P
8.9	241	149	7.1	1.70	EFF47R17	4P
10	212	131	7.3	1.95	EF47R17	4P
9.2	235	145	3.5	0.85	EFA37R17	4P
10	209	129	3.9	1.00	EFA37R17	4P
11	191	118	4.2	1.10	EF37R17	4P
14	159	98	4.5	1.30	EFA37R17	4P
15	141	87	4.7	1.45	EF37R17	4P
3.0	752	281.71	18	1.95	EFA77	6P
3.2	702	262.93	18	2.10	EF77	6P
3.8	602	225.79	19	2.50	EF77	6P
4.3	529	198.31	19	2.80	EFF77	6P
4.5	503	188.40	19	2.90	EF77	6P
3.7	611	228.99	11	1.30	EFA67	6P
4.4	521	195.39	12	1.55	EF67	6P
5.0	456	170.85	12	1.75	EFF67	6P
5.2	433	162.31	12	1.85	EF67	6P
6.0	380	142.40	12	2.10	EF67	6P
5.8	391	228.99	12	1.95	EFA67	4P
6.8	333	195.39	12	2.30	EF67	4P
7.8	291	170.85	12	2.60	EF67	4P
8.2	277	162.31	12	2.80	EFF67	4P
9.3	243	142.40	12	3.10	EF67	4P
4.3	533	199.70	9.1	1.10	EFA57	6P
4.6	490	183.60	9.4	1.20	EF57	6P
5.4	419	157.09	10	1.40	EF57	6P
6.2	363	136.16	10	1.60	EF57	6P
6.7	340	127.27	10	1.75	EFF57	6P
7.7	294	110.01	11	2.00	EF57	6P
6.7	341	199.70	10	1.65	EFA57	4P
7.2	313	183.60	10	1.80	EF57	4P
8.5	268	157.09	11	2.10	EF57	4P
9.8	232	136.16	11	2.40	EF57	4P
10	217	127.27	11	2.60	EFF57	4P
12	188	110.01	11	3.00	EF57	4P
5.7	400	150.06	5.5	1.00	EFA47	6P
6.5	347	130.07	6.2	1.15	EF47	6P
7.0	324	121.57	6.4	1.20	EF47	6P
8.1	280	105.09	6.8	1.40	EFF47	6P
7.0	325	190.76	6.2	1.15	EFA47	4P
7.6	299	175.38	6.5	1.25	EF47	4P
8.9	256	150.06	6.9	1.45	EF47	4P
10.2	222	130.07	7.2	1.65	EF47	4P
10.9	207	121.57	7.3	1.80	EFF47	4P
12.7	179	105.09	7.4	2.10	EF47	4P
14.9	152	89.29	7.6	2.40	EF47	4P
10	219	128.51	3.5	0.85	EFA47	6P
11	201	117.88	3.8	0.90	EF47	6P
13	171	100.36	4.3	1.10	EF47	6P
15	148	86.53	4.6	1.25	EFA37	6P
16	138	80.65	4.7	1.35	EF37	6P
19	120	70.50	4.8	1.55	EF37	6P
20	113	66.09	4.9	1.65	EFF37	6P
23	99	58.32	4.9	1.85	EF37	6P
24	93	54.54	5.0	2.00	EF37	6P
26	88	51.70	5.0	2.10	EF37	6P
0.37kW						
0.20	16237	6772	81	0.80	EFA127R77	4P
0.22	14283	5957	84	0.85	EF127R77	4P
0.26	12427	5183	86	1.00	EF127R77	4P
0.29	10931	4559	86	1.15	EFF127R77	4P
0.34	9294	3876	86	1.35	EF127R77	4P
0.39	8176	3410	86	1.55	EF127R77	4P
0.44	7277	3035	86	1.70	EF127R77	4P
0.44	7294	3042	50	1.10	EFA107R77	4P
0.48	6620	2761	51	1.25	EFA107R77	4P
0.56	5690	2373	53	1.45	EF107R77	4P
0.64	4966	2071	54	1.65	EFF107R77	4P
0.83	3851	1606	56	2.10	EF107R77	4P
0.59	5383	2245	4.9	0.85	EFA97R57	4P
0.68	4724	1970	28	0.95	EF97R57	4P
0.77	4129	1722	29	1.10	EF97R57	4P
0.87	3661	1527	31	1.20	EF97R57	4P
1.0	3182	1327	32	1.40	EFF97R57	4P
1.1	2808	1171	32	1.60	EF97R57	4P
1.3	2450	1022	33	1.85	EF97R57	4P
1.5	2153	898	34	2.10	EF97R57	4P
1.0	3117	1300	22	1.00	EFA87R57	4P
1.2	2753	1148	23	1.15	EF87R57	4P
1.3	2422	1010	24	1.30	EF87R57	4P
1.5	2127	887	25	1.45	EFF87R57	4P
1.7	1870	780	26	1.65	EF87R57	4P
2.0	1616	674	27	1.95	EF87R57	4P
2.2	1460	609	27	2.15	EFF87R57	4P
2.6	1235	515	27	2.55	EF87R57	4P
2.9	1084	452	28	2.90	EF87R57	4P
1.6	1942	810	13	0.80	EFA77R37	4P
1.9	1702	710	14	0.90	EF77R37	4P
2.2	1475	615	16	1.05	EFA77R37	4P
2.5	1290	538	17	1.20	EF77R37	4P
2.8	1151	480	17	1.35		

选型参数表
(恒功率)

选型参数表 (恒功率)		Selection Table (Constant Power)				
n_a [r/min]	M_a [Nm]	i	F_{ra} [kN]	f_b	机型号 Type size	极数 Pole
0.37kW						
3.0	1048	437	5.5	0.80		
3.5	921	384	9.4	0.95	EFA67R37	4P
3.9	810	338	10	1.05	EFA67R37	4P
4.4	731	305	11	1.15	EF67R37	4P
5.2	616	257	11	1.40	EFA67R37	4P
5.8	554	231	12	1.55		
5.1	628	262	8.7	1.00	EFA57R37	4P
5.2	611	255	8.9	1.00	EFA57R37	4P
6.6	482	201	10	1.30	EF57R37	4P
7.3	434	181	10	1.45	EF57R37	4P
5.1	628	262	8.7	1.00	EFA57R37	4P
5.9	542	226	9.3	1.15	EFA57R37	4P
6.7	480	200	10	1.30	EFA57R37	4P
7.8	408	170	10	1.55	EF57R37	4P
8.8	364	152	10	1.70	EF57R37	4P
9.9	321	134	11	1.95		
7.6	420	175	5.7	1.00	EFA47R17	4P
9.0	352	147	6.4	1.20	EFA47R17	4P
10	312	130	6.8	1.35	EF47R17	4P
2.4	1377	270.68	27	2.10	EFA87	8P
2.6	1299	255.37	27	2.30	EFA87	8P
2.9	1164	228.93	27	2.50	EF87	8P
3.3	1003	197.20	27	2.90	EF87	8P
3.3	1021	270.68	27	2.80	EFA87	8P
3.5	963	255.37	28	3.00	EF87	8P
3.9	863	228.93	28	3.30	EF87	8P
3.9	852	225.79	18	1.70		
4.5	748	198.31	18	1.95	EFA77	6P
4.7	711	188.40	18	2.00	EFA77	6P
5.3	628	166.47	18	2.30	EF77	6P
6.3	537	142.27	19	2.70	EF77	6P
4.7	711	281.71	18	2.10	EFA77	4P
5.1	664	262.93	18	2.20	EFA77	4P
5.9	570	225.79	19	2.60	EF77	4P
6.7	501	198.31	19	3.00	EF77	4P
4.6	737	195.39	10	1.05	EFA67	6P
5.2	644	170.85	11	1.20	EFA67	6P
5.5	612	162.31	11	1.30	EF67	6P
6.3	537	142.40	11	1.45	EF67	6P
7.4	456	120.79	12	1.75		
5.8	578	228.99	11	1.40		
6.8	493	195.39	12	1.65	EFA67	4P
7.8	431	170.85	12	1.85	EFA67	4P
8.2	410	162.31	12	1.95	EF67	4P
9.3	359	142.40	12	2.20	EF67	4P
11	305	120.79	12	2.70		
5.6	596	157.09	8.6	0.95	EFA57	6P
6.5	516	136.16	9.2	1.10	EFA57	6P
7.0	483	127.27	9.4	1.20	EF57	6P
8.0	417	110.01	10	1.40	EF57	6P
6.7	504	199.70	9.4	1.15		
7.2	463	183.60	10	1.30		
8.5	396	157.09	10	1.50	EFA57	4P
9.8	344	136.16	10	1.70	EFA57	4P
10	321	127.27	10	1.85	EF57	4P
12	278	110.01	11	2.10	EF57	4P
14	236	93.47	11	2.50		
16	211	83.46	11	2.80		

选型参数表
(恒功率)

选型参数表 (恒功率)		Selection Table (Constant Power)				
n_a [r/min]	M_a [Nm]	i	F_{ra} [kN]	f_b	机型号 Type size	极数 Pole
0.55kW						
1.0	4526	1327	28	0.95		
1.2	3994	1171	29	1.05		
1.4	3485	1022	30	1.20		
1.5	3062	898	32	1.40	EFA97R57	4P
1.8	2674	784	32	1.75	EFA97R57	4P
2.0	2353	690	33	1.85	EF97R57	4P
2.3	2033	605	34	2.10	EF97R57	4P
2.6	1804	529	34	2.40		
3.0	1593	467	34	2.70		
3.4	1385	406	35	3.10		
3.8	1238	363	35	3.45		
1.6	3025	887	17	1.00		
1.8	2660	780	23	1.10	EFA87R57	4P
2.1	2299	674	24	1.30	EFA87R57	4P
2.3	2077	609	25	1.45	EF87R57	4P
2.7	1756	515	26	1.70	EF87R57	4P
3.1	1541	452	26	1.95		
4.0	1177	345	27	2.55		
2.6	1855	538	9.5	2.80	EFA77R37	4P
2.9	1637	480	14	0.90	EFA77R37	4P
3.4	1408	413	15	1.05	EF77R37	4P
3.8	1252	367	16	1.20	EF77R37	4P
4.3	1102	323	17	1.35		
5.4	876	257	9.2	0.90	EFA67R37	4P
6.0	788	231	10	1.05	EFA67R37	4P
6.8	699	205	11	1.15	EF67R37	4P
7.9	597	175	11	1.35	EF67R37	4P
2.4	2092	276.77	33	2.00	EFA97	8P
2.6	1916	253.41	34	2.20	EF97	8P
2.9	1693	223.88	34	2.50	EF97	8P
2.4	2046	270.68	25	1.45	EFA87	8P
2.6	1931	255.37	25	1.50	EFA87	8P
2.9	1731	228.93	26	1.70	EF87	8P
3.3	1491	197.20	26	1.95	EF87	8P
3.3	1518	270.68	26	1.90		
3.5	1432	255.37	26	2.00	EFA87	6P
3.9	1284	228.93	27	2.20	EFA87	6P
4.5	1106	197.20	27	2.60	EF87	6P
4.9	1009	179.97	27	2.90	EF87	6P
3.9	1266	225.79	16	1.15		
4.5	1112	198.31	17	1.30	EFA77	6P
4.7	1056	188.40	17	1.35	EFA77	6P
5.3	933	166.47	17	1.55	EF77	6P
6.3	798	142.27	18	1.80	EF77	6P
6.8	731	130.42	18	1.95		
6.2	811	225.79	18	1.70		
7.0	712	198.31	18	1.95		
7.4	676	188.40	18	2.10	EFA77	4P
8.3	598	166.47	18	2.30	EFA77	4P
9.8	511	142.27	19	2.70	EF77	4P
11	468	130.42	19	3.00	EF77	4P
12	411	114.45	19	3.40		
13	389	108.46	19	3.60		
15	341	94.93	19	4.10		
7.1	701	195.39	10	1.10		
8.1	613	170.85	11	1.25		
8.6	583	162.31	11	1.30	EFA67	4P
9.8	511	142.40	12	1.50	EFA67	4P
12	431	120.79	12	1.75	EF67	4P
13	391	109.04	12	1.95	EF67	4P
14	344	95.94	12	2.20		
15	325	90.59	12	2.30		
17	286	79.76	12	2.70		
0.75kW						
5.9	85	23.63	4.5	2.20		
6.8	74	20.57	4.3	2.50		
7.2	69	19.27	4.2	2.70		
8.2	61	17.03	4.1	3.00		
9.7	51	14.33	3.9	3.60		
10.8	46	12.87	3.8	4.00	EFA37	4P
12.5	40	11.08	3.7	4.45	EF37	4P
14.2	37	10.42	3.6	4.60	EFA37	4P
15.5	32	8.97	3.5	5.10	EF37	4P
17.4	29	8.01	3.4	5.50	EF37	4P
18.7	27	7.44	3.3	5.10		
20.6	24	6.74	3.2	5.40		
23.0	22	6.05	3.1	5.80		
26.7	19	5.21	2.9	6.20		
28.4	18	4.90	2.9	6.30		
32.9	15	4.22	2.8	6.80		
36.9	14	3.77	2.7	7.20		
0.52	12533	2695	108	1.45	EFA157R97	4P
0.58	11212	2411	110	1.70	EFA157R97	4P
0.86	7548	1623	114	2.40	EFA157R97	4P
1.1	5892	1267	114	3.10	EF157R97	4P
1.2	5269	1133	114	3.50	EF157R97	4P
0.46	14114	3035	83	0.85	EFA127R77	4P
0.52	12407	2668	85	0.95	EF127R77	4P
0.58	11087	2384	86	1.10	EFA127R77	4P
0.68	9459	2034	86	1.25	EFA127R77	4P
0.78	8282	1781	86	1.45	EF127R77	4P
0.87	7459	1604	86	1.60	EF127R77	4P

选型参数表
(恒功率)

选型参数表
(恒功率)

选型参数表 (恒功率)		Selection Table (Constant Power)					选型参数表 (恒功率)		Selection Table (Constant Power)									
n_a [r/min]	Ma [Nm]	F_{ra} [kN]	f_b	机型号 Type size	极数 Pole	n_a [r/min]	Ma [Nm]	F_{ra} [kN]	f_b	机型号 Type size	极数 Pole	n_a [r/min]	Ma [Nm]	F_{ra} [kN]	f_b	机型号 Type size	极数 Pole	
0.75kW																		
0.76	8506	1829	46	0.90	4P	8.1	810	170.85	9.2	0.90	EFA67	8.1	810	170.85	9.2	0.90	EFA67	4P
0.87	7469	1606	48	1.05	4P	8.6	769	162.31	10	0.95	EFA67	8.6	769	162.31	10	0.95	EFA67	4P
0.99	6553	1409	50	1.20	4P	9.2	675	142.40	11	1.10	EF67	9.2	675	142.40	11	1.10	EF67	4P
1.1	5790	1245	52	1.35	4P	12	573	120.79	11	1.30	EFF67	13	517	109.04	11	1.45	EFF67	4P
1.3	5083	1093	53	1.50	4P	14	455	95.94	12	1.65	EFA67	14	455	95.94	12	1.65	EFA67	4P
1.5	4446	956	55	1.75	4P	15	439	90.59	12	1.75	EFA67	15	439	90.59	12	1.75	EFA67	4P
1.7	3902	839	56	2.00	4P	17	378	79.76	12	2.00	EF67	17	378	79.76	12	2.00	EF67	4P
2.2	2995	644	57	2.60	4P	21	321	67.65	12	2.30	EFF67	23	290	61.07	12	2.60	EFF67	4P
3.2	2037	438	59	3.85	4P	23	290	61.07	12	2.60	EFF67	23	290	61.07	12	2.60	EFF67	4P
1.4	4753	1022	22	0.90	4P	11	603	127.27	5.0	0.90	4P	11	603	127.27	5.0	0.90	4P	4P
1.5	4176	898	29	1.00	4P	13	522	110.01	8.9	1.05	4P	13	522	110.01	8.9	1.05	4P	4P
1.8	3646	784	30	1.20	4P	15	443	93.47	10	1.25	EFA57	15	443	93.47	10	1.25	EFA57	4P
2.0	3209	690	31	1.35	4P	17	396	83.46	10	1.40	EFA57	17	396	83.46	10	1.40	EFA57	4P
2.3	2814	605	32	1.55	4P	19	346	72.98	10	1.60	EF57	19	346	72.98	10	1.60	EF57	4P
2.6	2460	529	33	1.75	4P	20	323	68.22	10	1.70	EFF57	20	323	68.22	10	1.70	EFF57	4P
3.0	2172	467	33	2.00	4P	24	280	58.97	11	1.95	4P	24	280	58.97	11	1.95	4P	4P
3.4	1888	406	34	2.30	4P	28	238	50.10	11	2.30	4P	28	238	50.10	11	2.30	4P	4P
3.8	1688	363	34	2.55	4P	31	212	44.73	11	2.60	EFA47	31	212	44.73	11	2.60	EFA47	4P
2.1	3134	674	14	0.95	4P	17	378	79.72	4.8	0.95	EFA47	17	378	79.72	4.8	0.95	EFA47	4P
2.3	2832	609	22	1.05	4P	20	323	68.09	6.2	1.15	EF47	20	323	68.09	6.2	1.15	EF47	4P
2.7	2395	515	24	1.25	4P	25	268	56.49	6.8	1.35	4P	25	268	56.49	6.8	1.35	4P	4P
3.1	2102	452	25	1.45	4P	31	210	43.85	7.2	1.60	4P	31	210	43.85	7.2	1.60	4P	4P
4.0	1604	345	26	1.85	4P	40	160	32.25	8.0	2.00	4P	40	160	32.25	8.0	2.00	4P	4P
3.8	1707	367	13	0.85	4P	25	268	56.49	6.8	1.35	4P	25	268	56.49	6.8	1.35	4P	4P
4.3	1502	323	15	1.00	4P	29	228	48.00	7.1	1.60	EFA47	29	228	48.00	7.1	1.60	EFA47	4P
5.0	1302	280	16	1.15	4P	32	203	42.86	7.3	1.80	EFA47	32	203	42.86	7.3	1.80	EFA47	4P
5.0	1302	280	16	1.15	4P	38	174	36.61	7.4	2.10	EF47	38	174	36.61	7.4	2.10	EF47	4P
5.0	1302	280	16	1.15	4P	41	163	34.29	7.5	2.20	EFF47	41	163	34.29	7.5	2.20	EFF47	4P
5.0	1302	280	16	1.15	4P	48	137	28.88	7.2	2.70	4P	48	137	28.88	7.2	2.70	4P	4P
2.7	2513	554.81	58	3.00	8P	30	223	47.02	3.4	0.80	4P	30	223	47.02	3.4	0.80	4P	8P
2.7	2513	554.81	58	3.00	8P	32	208	43.83	3.7	0.90	EFA37	32	208	43.83	3.7	0.90	EFA37	8P
2.7	2513	554.81	58	3.00	8P	36	182	38.31	4.1	1.00	EFA37	36	182	38.31	4.1	1.00	EFA37	8P
2.5	2729	276.77	32	1.55	8P	39	170	35.91	4.3	1.05	EF37	39	170	35.91	4.3	1.05	EF37	8P
2.7	2499	253.41	32	1.70	8P	44	150	31.69	4.4	1.20	EFF37	44	150	31.69	4.4	1.20	EFF37	8P
3.1	2208	223.88	33	1.90	8P	49	133	28.09	4.3	1.35	4P	49	133	28.09	4.3	1.35	4P	8P
3.1	2208	223.88	33	1.90	8P	58	113	23.88	4.2	1.60	4P	58	113	23.88	4.2	1.60	4P	8P
3.3	2070	276.77	33	1.95	8P	59	112	23.63	4.2	1.65	4P	59	112	23.63	4.2	1.65	4P	8P
3.6	1895	253.41	34	2.10	8P	68	98	20.57	4.1	1.85	4P	68	98	20.57	4.1	1.85	4P	8P
4.1	1674	223.88	34	2.40	8P	72	91	19.27	4.0	2.00	4P	72	91	19.27	4.0	2.00	4P	8P
3.4	2024	270.68	25	1.40	6P	82	81	17.03	3.9	2.30	4P	82	81	17.03	3.9	2.30	4P	6P
3.6	1909	255.37	25	1.50	6P	97	68	14.33	3.8	2.70	4P	97	68	14.33	3.8	2.70	4P	6P
4.0	1712	228.93	26	1.65	6P	108	61	12.87	3.7	3.00	EFA37	108	61	12.87	3.7	3.00	EFA37	6P
4.6	1475	197.20	26	1.90	6P	125	53	11.08	3.5	3.30	4P	125	53	11.08	3.5	3.30	4P	6P
5.1	1346	179.97	27	2.10	6P	133	49	10.42	3.5	3.40	EF37	133	49	10.42	3.5	3.40	EF37	6P
5.7	1193	159.61	27	2.40	6P	155	43	8.92	3.4	3.80	EFF37	155	43	8.92	3.4	3.80	EFF37	6P
5.1	1325	270.68	27	2.10	6P	206	32	6.74	3.1	4.00	4P	206	32	6.74	3.1	4.00	4P	6P
5.4	1250	255.37	27	2.30	6P	230	25	5.21	3.0	4.30	4P	230	25	5.21	3.0	4.30	4P	6P
6.1	1121	228.93	27	2.50	6P	267	25	5.21	2.9	4.60	4P	267	25	5.21	2.9	4.60	4P	6P
6.6	1011	208.93	27	2.80	6P	284	23	4.90	2.8	4.70	4P	284	23	4.90	2.8	4.70	4P	6P
4.6	1483	198.31	14	0.95	4P	329	20	4.22	2.7	5.00	4P	329	20	4.22	2.7	5.00	4P	4P
4.8	1409	188.40	15	1.00	4P	369	18	3.77	2.6	5.40	4P	369	18	3.77	2.6	5.40	4P	4P
5.5	1245	166.47	16	1.15	4P	409	15	3.30	2.5	5.80	4P	409	15	3.30	2.5	5.80	4P	4P
6.4	1064	142.27	17	1.30	4P	461	11	2.80	2.4	6.20	4P	461	11	2.80	2.4	6.20	4P	4P
7.0	975	130.42	17	1.45	4P	512	8	2.30	2.3	6.60	4P	512	8	2.30	2.3	6.60	4P	4P
6.2	1325	225.79	17	1.30	4P	558	6	1.80	2.2	7.00	4P	558	6	1.80	2.2	7.00	4P	4P
7.0	1250	198.31	17	1.45	4P	624	4	1.30	2.1	7.40	4P	624	4	1.30	2.1	7.40	4P	4P
7.4	1121	188.40	17	1.55	4P	664	4	1.10	2.0	7.80	4P	664	4	1.10	2.0	7.80	4P	4P
8.3	971	166.47	18	1.75	4P	724	3	0.80	1.9	8.20	4P	724	3	0.80	1.9	8.20	4P	4P
9.8	922	142.27	18	2.00	4P	798	2	0.60	1.8	8.60	4P	798	2	0.60	1.8	8.60	4P	4P
11	815	130.42	18	2.20	4P	878	1	0.40	1.7	9.00	4P	878	1	0.40	1.7	9.00	4P	4P
12	696	114.45	19	2.50	4P	968	1	0.30	1.6	9.40	4P	968	1	0.30	1.6	9.40	4P	4P
13	638	108.46	19	2.70	4P	1068	1	0.20	1.5	9.80	4P	1068	1	0.20	1.5	9.80	4P	4P

选型参数表
(恒功率)

选型参数表
(恒功率)

选型参数表 (恒功率)		Selection Table (Constant Power)					选型参数表 (恒功率)		Selection Table (Constant Power)								
n_a [r/min]	Ma [Nm]	F_{ra} [kN]	f_b	机型号 Type size	极数 Pole	n_a [r/min]	Ma [Nm]	F_{ra} [kN]	f_b	机型号 Type size	极数 Pole	n_a [r/min]	Ma [Nm]	F_{ra} [kN]	f_b	机型号 Type size	极数 Pole
1.1kW																	
1.5	6251	923	114	2.75	4P	12	861	120.7									

选型参数表
(恒功率)

选型参数表 (恒功率)		Selection Table (Constant Power)					
n_a [r/min]	Ma [Nm]	i	F_{ra} [kN]	f_b	机型号 Type size	极数 Pole	
1.5kW							
0.7	14812	1604	81	0.80	EFA77	4P	
1.0	12910	1398	85	0.95	EFAF77	4P	
1.1	11331	1227	86	1.20	EFF77	4P	
1.3	9973	1080	86	1.20	EFA127R77	4P	
1.5	8477	918	86	1.40	EFA127R77	4P	
1.7	7480	810	86	1.60	EFF127R77	4P	
1.9	6630	718	86	1.80	EFF127R77	4P	
2.2	5901	639	86	2.05	EFF127R77	4P	
1.5	8828	956	45	0.90	EFA77	4P	
1.7	7748	839	47	1.00	EFA77	4P	
1.9	6834	740	50	1.15	EFA77	4P	
2.2	5947	644	52	1.30	EFA77	4P	
2.5	5217	565	53	1.50	EFA77	4P	
2.8	4543	492	55	1.75	EFA77	4P	
3.2	4045	438	55	1.95	EFA77	4P	
3.6	3435	372	57	2.30	EFA77	4P	
2.6	4885	529	19	0.90	EFA97R57	4P	
3.0	4313	467	28	1.00	EFA97R57	4P	
3.4	3749	406	30	1.15	EFA97R57	4P	
3.9	3352	363	31	1.30	EFA97R57	4P	
4.1	3186	345	11	0.95	EFA87R57	4P	
4.7	2770	300	23	1.10	EFA87R57	4P	
5.6	2299	249	24	1.30	EFF87R57	4P	
2.7	5099	548.81	53	1.50	EFA107	8P	
3.2	4317	215.69	55	1.75	EFA107	8P	
3.4	3995	199.64	55	1.90	EFA107	8P	
3.8	3581	178.93	56	2.10	EFF107	8P	
3.7	3689	254.81	56	1.95	EFA107	6P	
4.4	3123	215.69	57	2.30	EFA107	6P	
4.7	2890	199.64	57	2.50	EFA107	6P	
5.3	2590	178.93	58	2.80	EFF107	6P	
3.4	4007	276.77	28	1.00	EFA97	6P	
3.7	3669	253.41	29	1.10	EFA97	6P	
4.2	3241	223.88	30	1.25	EFF97	6P	
4.9	2750	189.92	32	1.45	EFF97	6P	
5.4	2532	174.87	32	1.60	EFF97	6P	
5.1	2690	276.77	32	1.55	EFA97	4P	
5.5	2463	253.41	33	1.65	EFA97	4P	
6.3	2176	223.88	33	1.90	EFF97	4P	
7.4	1846	189.92	34	2.20	EFF97	4P	
8.0	1700	174.87	34	2.40	EFF97	4P	
5.2	2631	270.68	23	1.10	EFA87	4P	
5.5	2482	255.37	23	1.15	EFA87	4P	
6.1	2225	228.93	24	1.30	EFF87	4P	
7.1	1917	197.20	25	1.50	EFF87	4P	
7.8	1749	179.97	26	1.65	EFA87	4P	
8.8	1551	159.61	26	1.85	EFA87	4P	
10	1304	134.16	27	2.20	EFF87	4P	
13	1064	109.49	27	2.70	EFF87	4P	
14	952	97.89	28	3.00	EFF87	4P	
8.4	1618	166.47	14	0.90	EFA77	4P	
9.8	1383	142.27	15	1.05	EFA77	4P	
11	1268	130.42	16	1.15	EFF77	4P	
12	1113	114.45	17	1.30	EFF77	4P	
13	1054	108.46	17	1.35	EFF77	4P	
15	923	94.93	17	1.55	EFF77	4P	
16	831	85.52	18	1.75	EFF77	4P	
19	729	75.02	18	1.95	EFA77	4P	
21	646	66.46	18	2.20	EFF77	4P	
24	567	58.32	19	2.50	EFF77	4P	
25	537	55.27	19	2.70	EFF77	4P	
29	470	48.37	19	3.00	EFF77	4P	
32	424	43.58	19	3.40	EFF77	4P	
37	372	38.23	19	3.90	EFF77	4P	
1.1	16800	1267	96	1.05	EFA157R97	4P	
1.3	15023	1133	101	1.15	EFA157R97	4P	
1.5	13239	923	107	1.40	EFA157R97	4P	
1.7	10860	819	110	1.60	EFA157R97	4P	
1.9	9812	740	111	1.75	EFA157R97	4P	
2.2	8778	662	113	1.95	EFA157R97	4P	
2.5	7439	561	114	2.30	EFA157R97	4P	
2.8	6514	446	114	3.00	EFA157R97	4P	
3.2	5914	446	114	4.40	EFA157R97	4P	
3.6	5354	297	114	4.85	EFA157R97	4P	
4.1	4837	268	114	5.70	EFA157R97	4P	
4.7	4358	227	114	6.90	EFA157R97	4P	
5.6	3599	196	114	8.50	EFA157R97	4P	

选型参数表
(恒功率)

选型参数表 (恒功率)		Selection Table (Constant Power)					
n_a [r/min]	Ma [Nm]	i	F_{ra} [kN]	f_b	机型号 Type size	极数 Pole	
2.2kW							
1.3	14321	1080	81	0.85	EFA77	4P	
1.6	12173	918	85	1.00	EFA77	4P	
1.8	10740	810	86	1.10	EFA127R77	4P	
2.0	9521	718	86	1.25	EFA127R77	4P	
2.2	8473	639	86	1.40	EFA127R77	4P	
2.6	7280	549	86	1.65	EFF127R77	4P	
2.9	6564	495	86	1.80	EFF127R77	4P	
3.2	5839	432	86	2.10	EFF127R77	4P	
3.3	5728	432	86	2.10	EFF127R77	4P	
2.5	7492	565	48	1.05	EFA107R77	4P	
2.9	6524	492	50	1.20	EFA107R77	4P	
3.3	5808	438	51	1.35	EFA107R77	4P	
3.8	4933	372	53	1.60	EFF107R77	4P	
4.3	4442	335	54	1.75	EFF107R77	4P	
3.9	4813	363	16	0.90	EFA97R57	4P	
5.0	3779	285	30	1.15	EFA97R57	4P	
5.8	3249	245	31	1.30	EFF97R57	4P	
2.8	7163	254.81	47	1.00	EFA107	8P	
3.3	6063	215.69	50	1.20	EFA107	8P	
3.6	5612	199.64	51	1.30	EFF107	8P	
4.0	5030	178.93	53	1.45	EFF107	8P	
3.7	5411	254.81	52	1.35	EFA107	6P	
4.4	4580	215.69	54	1.60	EFA107	6P	
4.7	4239	199.64	55	1.70	EFF107	6P	
5.3	3799	178.93	55	1.90	EFF107	6P	
5.6	3557	254.81	56	2.00	EFA107	4P	
6.6	3011	215.69	57	2.40	EFA107	4P	
7.2	2787	199.64	57	2.60	EFF107	4P	
8.0	2497	178.93	58	2.90	EFF107	4P	
4.2	4754	223.88	12	0.85	EFA97	6P	
4.9	4033	189.92	29	1.00	EFA97	6P	
5.4	3713	174.87	29	1.10	EFF97	6P	
6.0	3319	156.30	30	1.25	EFF97	6P	
5.2	3863	276.77	29	1.05	EFA97	4P	
5.6	3537	253.41	30	1.15	EFA97	4P	
6.4	3125	223.88	31	1.30	EFF97	4P	
7.5	2651	189.92	32	1.50	EFF97	4P	
8.2	2441	174.87	32	1.65	EFF97	4P	
9.1	2182	156.30	33	1.85	EFF97	4P	
10	1964	140.71	33	2.00	EFF97	4P	
11	1778	127.42	34	2.30	EFF97	4P	
13	1577	112.99	34	2.80	EFF97	4P	
14	1426	102.16	34	2.80	EFF97	4P	
7.3	2752	197.20	21	1.00	EFA87	4P	
7.9	2512	179.97	23	1.10	EFA87	4P	
9.0	2228	159.61	24	1.25	EFA87	4P	
11	1873	134.16	25	1.50	EFA87	4P	
12	1721	123.29	26	1.65	EFA87	4P	
13	1528	109.49	26	1.85	EFA87	4P	
15	1366	97.89	27	2.10	EFF87	4P	
16	1228	88.01	27	2.30	EFF87	4P	
19	1066	76.39	26	2.60	EFF87	4P	
21	955	68.40	26	2.90	EFF87	4P	
25	792	56.75	25	3.50	EFF87	4P	
28	703	50.36	24	3.90	EFF87	4P	
32	632	45.28	23	4.20	EFF87	4P	
12	1597	114.45	13	0.90	EFA77	4P	
13	1514	108.46	14	0.95	EFA77	4P	
15	1325	94.93	15	1.05	EFF77	4P	
17	1194	85.52	16	1.20	EFF77	4P	
3.0kW							
1.1	1800	12.87	2.7	1.05	EFA77	4P	
1.11	1800	12.87	2.7	1.05	EFA77	4P	
1.29	155	11.08	2.7	1.15	EFA77	4P	
1.37	145	10.42	2.7	1.20	EFA77	4P	
1.59	125	8.97	2.7	1.30	EFA77	4P	
2.12	94	6.74	2.6	1.40	EFA77	4P	
2.36	84	6.05	2.5	1.50	EFA77	4P	
2.74	73	5.21	2.4	1.60	EFA77	4P	
2.92	68	4.90	2.4	1.65	EFA77	4P	
3.39	59	4.22	2.3	1.75	EFA77	4P	
3.79	53	3.77	2.3	1.85	EFA77	4P	
1.3	21565	1133	83	0.85	EFA157R97	4P	
1.5	17568	923	106	1.05	EFA157R97	4P	
1.7	15588	819	110	1.15	EFA157R97	4P	
1.9	14085	740	105	1.30	EFA157R97	4P	
2.2	12600	662	108	1.45	EFA157R97	4P	
2.5	10678	561	111	1.70	EFA157R97	4P	
3.2	8489	446	114	2.20	EFA157R97	4P	
4.8	5653	297	114	3.20	EFA157R97	4P	
5.3	5101	268	114	3.55	EFA157R97	4P	
7.3	3731	196	114	5.05	EFA157R97	4P	

选型参数表
(恒功率)

Selection Table
(Constant Power)

n _a [r/min]	Ma [Nm]	i	F _{ra} [kN]	f _β	机型号 Type size	极数 Pole	n _a [r/min]	Ma [Nm]	i	F _{ra} [kN]	f _β	机型号 Type size	极数 Pole
3.0kW													
2.0	13666	718	83	0.90	EFA127R77		68	398	20.90	12	1.90	EFA67	
2.2	12162	639	86	1.05	EFA127R77	4P	78	348	18.29	12	2.20	EFA67	4P
2.6	10449	549	86	1.20	EFA127R77		87	314	16.48	12	2.40	EF67	
2.9	9421	495	86	1.35	EFA127R77		99	275	14.46	12	2.80	EFF67	
3.3	8337	438	46	1.00	EFA107R77		57	475	24.96	7.1	1.15		
3.8	7080	372	49	1.15	EFA107R77	4P	68	403	21.17	7.0	1.40		
4.3	6376	335	51	1.30	EFA107R77		75	364	19.11	6.9	1.55	EFA57	
4.9	5558	292	53	1.45	EFF107R77		85	320	16.81	6.8	1.75	EFA57	4P
5.5	4850	254	57	1.60	EFA107		90	302	15.88	6.7	1.85	EF57	
6.3	4215	215	69	1.15	EFA107	6P	106	257	13.52	6.5	2.20	EFF57	
7.3	3660	199	64	1.25	EF107		116	234	12.29	6.4	2.40		
8.5	3173	178	53	1.40	EFF107		134	203	10.64	6.3	2.80		
9.9	2764	154	53	1.50			160	171	8.96	4.2	1.80		
11	2478	130	18	1.70			129	211	11.08	2.2	0.85		
12	2248	118	13	1.80			137	198	10.42	2.2	0.85		
14	2020	106	11	1.90			159	171	8.97	2.3	0.95		
16	1836	95	9	2.00			179	152	8.01	2.3	1.05	EFA37	
18	1685	86	7	2.10			212	128	6.74	2.2	1.00	EFA37	4P
21	1508	74	5	2.30			265	115	6.05	2.2	1.15	EF37	
24	1365	67	4	2.50			274	99	5.21	2.2	1.15	EFF37	
28	1208	59	3	2.80			292	93	4.90	2.2	1.20		
33	1075	52	3	3.10			339	80	4.22	2.1	1.25		
39	934	46	3	3.50			379	72	3.77	2.1	1.35		
4.0kW													
1.8	19608	819	87	0.90	EFA87		1.8	19608	819	87	0.90		
2.0	17717	740	93	1.00	EFA87		1.9	17717	740	93	1.00	EFA157R97	4P
2.2	15849	662	99	1.10	EF87		2.2	15849	662	99	1.10	EFA157R97	4P
2.6	13431	561	105	1.30	EFF87		2.6	13431	561	105	1.30	EFF157R97	4P
3.0	11851	495	86	1.00	EFA87		3.2	10678	446	110	1.70	EF157R97	
3.3	10343	432	86	1.15	EFA87		4.8	7111	297	114	2.45	EFF157R97	4P
3.8	9074	379	86	1.30	EFF87		5.4	6416	268	114	2.70		
4.3	8020	335	46	1.00	EFA87		6.3	5435	227	114	3.20		
4.9	6991	292	49	1.10	EFA87		7.3	4692	196	114	3.85		
5.6	6129	256	51	1.30	EFF87		2.6	13144	549	83	0.90	EFA127R77	
6.2	5436	222	56	1.40	EFF87		2.9	11851	495	86	1.00	EFA127R77	4P
7.0	4768	184	86	1.30	EFA87		3.3	10343	432	86	1.15	EF127R77	
7.7	4243	163	86	1.40	EFF87		3.8	9074	379	86	1.30	EFF127R77	
8.5	3728	143	86	1.50	EFF87		4.3	8020	335	46	1.00	EFA107R77	
9.4	3295	124	86	1.60	EFF87		4.9	6991	292	49	1.10	EFA107R77	4P
10.4	2923	108	86	1.70	EFF87		5.6	6129	256	51	1.30	EFF107R77	
11.5	2605	95	86	1.80	EFF87		6.2	5436	222	56	1.40	EFA127	
12.7	2334	83	86	1.90	EFF87		7.0	4768	184	86	1.45	EFA127	8P
14.0	2109	74	86	2.00	EFF87		7.7	4243	163	86	1.80	EF127	
15.4	1924	67	86	2.10	EFF87		8.5	3728	143	86	1.80	EFF127	
16.9	1776	61	86	2.20	EFF87		9.4	3295	124	86	1.80	EFF127	
18.5	1656	56	86	2.30	EFF87		10.4	2923	108	86	1.90	EFF127	
20.2	1557	52	86	2.40	EFF87		11.5	2605	95	86	2.00	EFF127	
22.1	1473	48	86	2.50	EFF87		12.7	2334	83	86	2.10	EFF127	
24.1	1401	45	86	2.60	EFF87		14.0	2109	74	86	2.20	EFF127	
26.2	1340	43	86	2.70	EFF87		15.4	1924	67	86	2.30	EFF127	
28.5	1289	41	86	2.80	EFF87		16.9	1776	61	86	2.40	EFF127	
31.0	1247	40	86	2.90	EFF87		18.5	1656	56	86	2.50	EFF127	
33.6	1212	39	86	3.00	EFF87		20.2	1557	52	86	2.60	EFF127	
36.3	1183	38	86	3.10	EFF87		22.1	1473	48	86	2.70	EFF127	
39.1	1159	37	86	3.20	EFF87		24.1	1401	45	86	2.80	EFF127	
42.0	1140	36	86	3.30	EFF87		26.2	1340	43	86	2.90	EFF127	
45.0	1125	35	86	3.40	EFF87		28.5	1289	41	86	3.00	EFF127	
48.0	1114	34	86	3.50	EFF87		31.0	1247	40	86	3.10	EFF127	
51.0	1106	33	86	3.60	EFF87		33.6	1212	39	86	3.20	EFF127	
54.0	1100	32	86	3.70	EFF87		36.3	1183	38	86	3.30	EFF127	
57.0	1096	31	86	3.80	EFF87		39.1	1159	37	86	3.40	EFF127	
60.0	1093	31	86	3.90	EFF87		42.0	1140	36	86	3.50	EFF127	
63.0	1091	30	86	4.00	EFF87		45.0	1125	35	86	4.00	EFF127	
66.0	1090	30	86	4.10	EFF87		48.0	1114	34	86	4.50	EFF127	
70.0	1090	29	86	4.20	EFF87		51.0	1106	33	86	5.00	EFF127	
74.0	1090	28	86	4.30	EFF87		54.0	1100	32	86	5.50	EFF127	
78.0	1090	27	86	4.40	EFF87		57.0	1096	31	86	6.00	EFF127	
82.0	1090	27	86	4.50	EFF87		60.0	1093	31	86	6.50	EFF127	
86.0	1090	26	86	4.60	EFF87		63.0	1091	30	86	7.00	EFF127	
90.0	1090	26	86	4.70	EFF87		66.0	1090	30	86	7.50	EFF127	
94.0	1090	25	86	4.80	EFF87		70.0	1090	29	86	8.00	EFF127	
98.0	1090	25	86	4.90	EFF87		74.0	1090	28	86	8.50	EFF127	
102.0	1090	25	86	5.00	EFF87		78.0	1090	27	86	9.00	EFF127	
106.0	1090	24	86	5.10	EFF87		82.0	1090	27	86	9.50	EFF127	
110.0	1090	24	86	5.20	EFF87		86.0	1090	26	86	10.00	EFF127	
114.0	1090	24	86	5.30	EFF87		90.0	1090	26	86	10.50	EFF127	
118.0	1090	23	86	5.40	EFF87		94.0	1090	25	86	11.00	EFF127	
122.0	1090	23	86	5.50	EFF87		98.0	1090	25	86	11.50	EFF127	
126.0	1090	23	86	5.60	EFF87		102.0	1090	24	86	12.00	EFF127	
130.0	1090	23	86	5.70	EFF87		106.0	1090	24	86	12.50	EFF127	
134.0	1090	23	86	5.80	EFF87		110.0	1090	23	86	13.00	EFF127	
138.0	1090	23	86	5.90	EFF87		114.0	1090	23	86	13.50	EFF127	
138.0	1090	23	86	6.00	EFF87		118.0	1090	23	86	14.00	EFF127	
142.0	1090	23	86	6.10	EFF87		122.0	1090	22	86	14.50	EFF127	
146.0	1090	22	86	6.20	EFF87		126.0	1090	22	86	15.00	EFF127	
150.0	1090	22	86	6.30	EFF87		130.0	1090	22	86	15.50	EFF127	
154.0	1090	22	86	6.40	EFF87		134.0	1090	22	86	16.00	EFF127	
158.0	1090	22	86	6.50	EFF87		138.0	1090	22	86	16.50	EFF127	
162.0	1090	22	86	6.60	EFF87		142.0	1090	22	86	17.00	EFF127	
166.0	1090	22	86	6.70	EFF87		146.0	1090	22	86	17.50	EFF127	
170.0	1090	22	86	6.80	EFF87		150.0	1090	22	86	18.00	EFF127	
174.0	1090	22	86	6.90	EFF87		154.0	1090	22	86	18.50	EFF127	
178.0	1090	22	86	7.00	EFF87		158.0	1090	22	86	19.00	EFF127	
182.0	1090	22	86	7.10	EFF87		162.0	1090	22	86	19.50	EFF127	
186.0	1090	22	86	7.20	EFF87		166.0	1090	22	86	20.00	EFF127	
190.0	1090	22	86	7.30	EFF87		170.0	1090	22	86	20.50	EFF127	
194.0	1090	22	86	7.40	EFF87		174.0	1090	22	86	21.00	EFF127	
198.0	1090	22	86	7.50	EFF87		178.0	1090	22	86	21.50	EFF127	
202.0	1090	22	86	7.60	EFF87		182.0	1090	22	86	22.00	EFF127	
206.0	1090	22	86	7.70	EFF87		186.0	1090	22	86	22.50	EFF127	
210.0	1090	22	86	7.80	EFF87		190.0	1090	22	86	23.00	EFF127	
214.0	1090	22	86	7.90	EFF87		194.0	1090	22	86	23.50	EFF127	
218.0	1090	22	86	8.00	EFF87		198.0	1090	22	86	24.00	EFF127	
222.0	1090	22	86	8.10	EFF87		202.0	1090	22	86	24.50	EFF127	
226.0	1090	22											

选型参数表
(恒功率)

选型参数表 (恒功率)		Selection Table (Constant Power)					
n_a [r/min]	Ma [Nm]	i	F_{ra} [kN]	f_b	机型号 Type size	极数 Pole	
7.5kW							
4.6	14051	313	82	0.85	EFA127R87	8P	
15	49	13265	296	83	0.90	EFA127R87	4P
16	3113	89.85	31	1.30	0.90	0.90	
17	3001	86.59	31	1.35	0.90	0.90	
18	2783	80.31	32	1.45	EFA97	4P	
19	2621	75.63	32	1.55	EFA97	4P	
20	2505	72.29	32	1.60	EF97	4P	
21	2269	65.47	33	1.80	EF97	4P	
22	2269	65.47	33	1.80	EF97	4P	
25	2012	58.06	33	2.00	EF97	4P	
27	1819	52.49	32	2.20	EF97	4P	
32	1542	44.49	32	2.50	EF97	4P	
16	3050	88.01	5.5	0.95	EFA87	4P	
19	2647	76.39	20	1.05	EFA87	4P	
21	2370	68.40	20	1.20	EF87	4P	
25	1966	56.75	20	1.45	EF87	4P	
29	1745	50.36	20	1.60	EF87	4P	
32	1569	45.28	19	1.70	EF87	4P	
37	1362	39.30	19	1.90	EF87	4P	
41	1219	35.19	19	2.00	EF87	4P	
49	1012	29.20	18	2.30	EF87	4P	
42	1175	33.92	19	2.10	EFA87	4P	
50	997	28.78	18	2.30	EFA87	4P	
54	918	26.50	18	3.10	EF87	4P	
61	821	23.68	17	3.50	EF87	4P	
68	739	21.32	17	3.80	EF87	4P	
30	1676	48.37	13	0.85	EFA77	4P	
33	1510	43.58	14	0.95	EFA77	4P	
38	1325	38.23	15	1.05	EF77	4P	
43	1169	33.74	16	1.20	EF77	4P	
48	1036	29.91	17	1.35	EF77	4P	
56	885	25.54	18	1.55	EF77	4P	
67	743	21.43	18	1.90	EF77	4P	
73	683	19.70	18	2.10	EFA77	4P	
82	606	17.49	18	2.30	EF77	4P	
92	542	15.64	19	2.60	EF77	4P	
102	487	14.06	18	2.90	EF77	4P	
118	423	12.20	18	3.30	EF77	4P	
132	379	10.93	18	3.60	EF77	4P	
155	322	9.30	18	4.20	EF77	4P	
65	764	23.05	10	1.00			
69	724	20.90	10	1.05			
79	634	18.29	11	1.20			
87	571	16.48	11	1.35			
100	501	14.46	12	1.55			
113	442	12.76	12	1.75			
127	392	11.31	12	1.95	EFA67	4P	
149	335	9.66	12	2.30	EF67	4P	
159	315	9.08	12	2.60	EF67	4P	
167	298	8.60	12	1.80	EF67	4P	
191	261	7.53	11	2.20	EF67	4P	
212	235	6.78	11	2.50	EF67	4P	
242	206	5.95	11	3.00	EF67	4P	
274	182	5.25	11	3.30	EF67	4P	
309	161	4.66	10	3.10	EF67	4P	
363	138	3.97	10	3.40	EF67	4P	
86	582	16.81	5.2	0.95			
91	550	15.88	5.2	1.05			
107	468	13.82	5.3	1.20			
117	426	12.29	5.3	1.35	EFA57	4P	
135	369	10.64	5.2	1.55	EFA57	4P	
176	284	8.19	4.9	1.50	EF57	4P	
186	268	7.73	4.9	1.50	EF57	4P	
219	228	6.58	4.8	1.75	EF57	4P	
241	207	5.98	4.8	1.90	EF57	4P	
278	179	5.18	4.7	2.20	EF57	4P	

选型参数表
(恒功率)

选型参数表 (恒功率)		Selection Table (Constant Power)				
n_a [r/min]	Ma [Nm]	i	F_{ra} [kN]	f_b	机型号 Type size	极数 Pole
7.5kW						
22	3094	65.47	31	1.30	EFA97	4P
25	2743	58.06	30	1.50	EFA97	4P
27	2480	52.49	29	1.65	EF97	4P
32	2102	44.49	29	1.95	EF97	4P
37	1836	38.86	28	2.20	EF97	4P
44	1536	32.50	27	2.60	EF97	4P
33	2045	43.28	29	1.40	EFA97	4P
39	1731	36.64	28	1.65	EFA97	4P
42	1602	33.91	28	2.50	EF97	4P
47	1436	30.39	27	2.80	EF97	4P
52	1297	27.44	27	3.00	EF97	4P
25	2682	56.75	17	1.05	EFA87	4P
29	2380	50.36	17	1.15	EFA87	4P
32	2140	45.28	17	1.25	EFA87	4P
37	1857	39.30	17	1.40	EF87	4P
41	1663	35.19	17	1.50	EF87	4P
49	1380	29.20	17	1.70	EF87	4P
50	1360	28.78	17	1.70	EF87	4P
54	1252	26.50	17	2.30	EFA87	4P
61	1119	23.68	16	2.50	EF87	4P
68	1007	21.32	16	2.80	EF87	4P
75	912	19.31	16	3.10	EF87	4P
84	809	17.12	15	3.50	EF87	4P
93	731	15.48	14	3.90	EF87	4P
43	1594	33.74	14	0.90	EFA77	4P
48	1413	29.91	15	1.00	EFA77	4P
56	1207	25.54	16	1.15	EF77	4P
56	1205	25.50	16	1.15	EF77	4P
67	1013	21.43	17	1.50	EF77	4P
73	931	19.70	17	1.50	EF77	4P
82	826	17.49	18	1.70	EF77	4P
92	739	15.64	18	1.90	EF77	4P
102	664	14.06	18	2.10	EFA77	4P
118	576	12.20	17	2.50	EFA77	4P
132	516	10.93	17	2.70	EF77	4P
155	439	9.30	16	2.30	EF77	4P
174	390	8.26	15	2.60	EF77	4P
195	349	7.39	15	2.90	EF77	4P
217	314	6.64	15	3.20	EF77	4P
250	272	5.76	14	3.70	EF77	4P
279	244	5.16	14	4.20	EF77	4P
336	202	4.28	13	4.70	EF77	4P
11.0kW						
4.9	19286	297	88	0.90	EFA157R97	8P
5.4	17403	268	94	1.00	EFA157R97	4P
6.4	14741	227	102	1.15	EFA157R97	4P
7.4	12857	198	106	1.35	EFA157R97	4P
7.4	12728	196	106	1.40	EFA157R97	4P
6.5	14611	225	80	0.80	EFA127R87	4P
7.5	12643	195	84	0.95	EFA127R87	4P
8.7	10955	169	86	1.10	EFA127R87	4P
5.1	19394	141.86	87	0.85	EFA157	8P
6.1	16333	119.47	95	1.00	EFA157	8P
6.8	14737	107.80	101	1.15	EF157	8P
7.6	13172	96.35	105	1.30	EF157	8P
5.5	18052	175.46	91	0.90	EFA157	8P
6.0	16089	162.21	96	1.00	EFA157	8P
6.8	14595	141.86	102	1.15	EFA157	8P
8.1	12292	119.47	105	1.30	EFA157	8P
9.0	11091	107.80	109	1.50	EFA157	8P
10	9913	96.35	111	1.70	EFA157	8P
12	8480	82.42	112	1.90	EFA157	8P
13	7839	76.19	113	2.10	EFA157	8P
11.0kW						
5.5	18307	267.82	91	0.90		
6.7	14801	216.53	101	1.15		
8.3	11993	175.46	107	1.40	EFA157	4P
9.0	11088	162.21	109	1.50	EFA157	4P
10	9697	141.86	111	1.75	EFA157	4P
12	8166	119.47	112	1.92	EFA157	4P
14	7369	107.80	114	2.30	EF157	4P
15	6586	96.35	114	2.60	EF157	4P
18	5634	82.42	112	2.90	EF157	4P
19	5208	76.19	110	3.10	EF157	4P
22	4554	66.63	106	3.60	EF157	4P
7.6	13048	136.82	83	0.85	EFA127	6P
8.5	11745	114.16	83	0.95	EFA127	6P
9.7	10240	99.53	86	1.10	EF127	6P
11	9010	87.57	86	1.25	EF127	6P
13	7658	74.43	86	1.45	EF127	6P
8.5	11736	171.70	85	0.95		
9.5	10535	154.12	86	1.05		
12	8559	125.22	86	1.30		
13	7803	114.16	86	1.45	EFA127	4P
15	6803	99.53	86	1.65	EFA127	4P
17	5986	87.57	86	1.90	EF127	4P
20	5088	74.43	84	2.20	EF127	4P
21	4796	70.16	84	2.35	EF127	4P
23	4372	63.96	84	2.50	EF127	4P
26	3811	55.76	84	2.80	EF127	4P
12	8075	118.13	45	0.90	EFA107	4P
14	6941	101.54	48	1.05	EFA107	4P
16	6357	93.00	50	1.15	EF107	4P
17	5774	84.47	51	1.25	EF107	4P
19	5123	74.95	53	1.40	EFA107	4P
21	4649	68.01	54	1.55	EFA107	4P
25	3996	58.46	54	1.80	EF107	4P
29	3487	51.02	52	2.10	EF107	4P
34	2958	43.28	51	2.50	EF107	4P
43	2344	34.29	48	3.00	EFA1	

选型参数表
(恒功率)

11.0kW		15.0kW		18.5kW		
n_a [r/min]	M_a [Nm]	i	F_{ra} [kN]	f_b	机型号 Type size	极数 Pole
111	897	13.12	14	3.10	EFA87	4P
127	783	11.46	14	3.50	EFAF87	4P
152	655	9.58	14	4.20	EF87	4P
176	567	8.29	14	4.80	EFF87	4P
74	1347	19.70	15	1.05		
83	1196	17.49	16	1.20		
93	1069	15.64	17	1.30		
104	961	14.06	17	1.45		
120	834	12.20	16	1.70	EF77	4P
134	747	10.93	16	1.90	EFAF77	4P
157	636	9.30	15	1.60	EF77	4P
177	565	8.26	14	1.80	EFF77	4P
198	505	7.39	14	2.00		
220	454	6.64	14	2.20		
253	394	5.76	13	2.60		
283	353	5.16	13	2.90		
341	293	4.28	13	3.20		
15.0kW						
6.4	20101	227	86	0.85	EFA157R97	4P
7.4	17533	198	95	1.00	EF157R97	4P
7.4	17356	196	96	1.05	EFF157R97	4P
6.8	19902	141.86	86	0.85	EFA157	6P
8.1	16761	119.47	94	0.95	EFAF157	6P
9.0	15124	107.80	100	1.10	EF157	6P
10	13518	96.35	104	1.25	EFF157	6P
12	11563	82.42	107	1.40		
6.7	20183	216.53	84	0.85		
8.3	16535	175.46	97	1.05		
9.0	15120	162.21	100	1.15		
10	13223	141.86	105	1.30		
12	11136	119.47	108	1.45	EFA157	4P
14	10048	107.80	111	1.70	EFAF157	4P
15	8981	96.35	110	1.90	EF157	4P
18	7682	82.42	108	2.10	EFF157	4P
19	7102	76.19	106	2.30		
22	6211	66.63	10	2.70		
26	5312	56.99	100	3.00		
9.7	13964	99.53	81	0.80	EFA127	6P
11	12286	87.57	84	0.95	EFAF127	6P
13	10442	74.43	84	1.10	EF127	6P
14	9843	70.16	83	1.15	EFF127	6P
15	8973	63.96	82	1.25		
12	11821	126.82	85	1.00		
13	10641	114.16	84	1.05		
15	9277	99.53	83	1.25		
17	8138	87.31	81	1.40	EFA127	4P
20	6938	74.43	80	1.60	EFAF127	4P
21	6540	70.16	79	1.75	EF127	4P
23	5962	63.96	79	1.90	EFF127	4P
26	5197	55.76	79	2.20		
30	4573	49.06	79	2.50		
35	3887	41.70	79	3.00		
16	8669	93.00	44	0.85	EFA107	4P
16	8261	88.63	45	0.90	EFAF107	4P
17	7874	84.47	46	0.95	EF107	4P
19	6986	74.95	48	1.05	EFF107	4P
21	6339	68.01	50	1.15		
23	5449	58.46	50	1.35	EFA107	4P
29	4756	51.02	49	1.55	EFAF107	4P
34	4034	43.28	48	1.80	EF107	4P
39	3517	37.73	47	2.10	EFF107	4P
46	2981	31.98	46	2.50		

选型参数表
(恒功率)

18.5kW		22kW		30kW		
n_a [r/min]	M_a [Nm]	i	F_{ra} [kN]	f_b	机型号 Type size	极数 Pole
34	4942	43.28	45	1.50	EFA107	4P
39	4308	37.73	45	1.70	EFAF107	4P
46	3651	31.98	44	2.00	EF107	4P
					EFF107	4P
43	3915	34.29	44	1.80		
53	3181	27.86	43	2.40	EFA107	4P
58	2900	25.40	42	2.60	EFAF107	4P
66	2528	22.14	41	3.00	EF107	4P
75	2224	19.48	41	3.40	EFF107	4P
89	1891	16.56	41	4.00		
38	4437	38.86	19	0.90	EFA97	4P
					EFAF97	4P
					EF97	4P
					EFF97	4P
45	3711	32.50	20	1.10		
54	3133	27.44	20	1.30		
59	2845	24.92	20	1.45		
66	2524	22.11	20	1.60	EFA97	4P
73	2292	20.07	20	1.80	EFAF97	4P
85	1970	17.25	19	2.10	EF97	4P
98	1720	15.06	19	2.40	EFF97	4P
115	1458	12.77	19	2.80		
132	1274	11.16	18	3.00		
69	2434	21.32	10	1.15		
76	2205	19.31	11	1.30		
86	1955	17.12	11	1.45		
95	1767	15.48	11	1.60		
112	1498	13.12	11	1.90	EFA87	4P
128	1308	11.46	11	2.20	EFAF87	4P
153	1094	9.58	11	2.50	EF87	4P
177	947	8.29	10	2.80	EFF87	4P
200	839	7.65	10	3.00		
221	759	6.65	10	3.20		
261	643	5.62	10	3.60		
299	562	4.92	10	4.00		
357	470	4.12	9.4	4.50		
22kW						
10	19826	96.35	86	0.85	EFA157	6P
12	16959	82.42	94	0.95	EFAF157	6P
13	15677	76.19	98	1.05	EF157	6P
15	13710	66.63	102	1.20	EFF157	6P
10	19262	141.86	88	0.90		
12	16222	119.47	95	1.00		
14	14637	107.80	101	1.15		
15	13082	96.35	102	1.30		
18	11191	82.42	100	1.45	EFA157	4P
19	10345	76.19	99	1.60	EFAF157	4P
22	9047	66.63	97	1.85	EF157	4P
26	7738	56.99	95	2.10	EFF157	4P
29	6874	50.63	92	2.40		
32	6145	45.26	90	2.70		
37	5343	39.35	87	3.10		
46	4354	31.93	83	3.90		
15	13514	99.53	73	0.85		
17	11890	87.57	72	0.95		
20	10106	74.43	72	1.10	EFA127	4P
21	9526	70.16	72	1.20	EFAF127	4P
23	8684	63.96	71	1.30	EF127	4P
26	7571	55.76	70	1.50	EFF127	4P
30	6661	49.06	69	1.70		
35	5662	41.70	67	2.00		
40	4987	36.73	67	2.30		
46	4322	31.83	67	2.60		
55	3605	26.55	67	3.00		
30kW						
14	19960	107.80	85	0.85		
15	17839	96.35	92	0.95		
18	15260	82.42	92	1.10	EFA157	4P
19	14107	76.19	91	1.20	EFAF157	4P
22	12337	66.63	90	1.35	EF157	4P
26	10552	56.99	89	1.55	EFF157	4P
29	9374	50.63	87	1.75		
32	8380	45.26	85	2.00		
37	7286	39.35	83	2.30		
46	5912	31.93	83	2.80		
20	13781	74.43	63	0.80		
21	12990	70.16	64	0.90	EFA127	4P
23	11842	63.96	64	1.00	EFAF127	4P
26	10324	55.76	63	1.10	EF127	4P
30	9084	49.06	63	1.25	EFF127	4P
35	7721	41.70	62	1.45		
40	6801	36.73	61	1.65		
46	5893	31.83	60	1.95		
58	4688	25.32	58	2.40		
55	4916	26.55	59	1.60	EFA127	4P
60	4546	24.55	58	1.80	EFAF127	4P
68	3975	21.47	56	2.90	EF127	4P
80	3399	18.36	55	3.00	EFF127	4P

选型参数表
(恒功率)

选型参数表
(恒功率)

选型参数表
(恒扭矩)

选型参数表
(恒扭矩)

Mamax [Nm]	n _a [r/min]	i	F _{ra} [kN]	机型号 Type size	P [kW]/4P	Mamax [Nm]	n _a [r/min]	i	F _{ra} [kN]	机型号 Type size	P [kW]/4P
200	0.16	8193	4.1	FFA47R17	0.12	400	2.1	619	5.6	FFA47R17	0.18
	0.19	7064	4.1	FFA47R17			FFA47R17				
	0.20	6585	4.1	FFA47R17			FFA47R17				
	0.23	5756	4.1	FFA47R17	FFA47R17						
	0.26	4963	4.1	FFA47R17	FFA47R17						
	0.30	4434	4.1	FFA47R17	FFA47R17						
	0.34	3875	4.1	FFA47R17	FFA47R17						
	0.39	3392	4.1	FFA47R17	FFA47R17						
	0.44	2965	4.1	FFA47R17	FFA47R17						
	0.51	2587	4.1	FFA47R17	FFA47R17						
	0.57	2284	4.1	FFA47R17	FFA47R17						
	0.66	1997	4.1	FFA47R17	FFA47R17						
	0.68	1929	4.1	FFA47R17	FFA47R17						
	0.78	1679	4.1	FFA47R17	FFA47R17						
	0.85	1550	4.1	FFA47R17	FFA47R17						
1.0	1356	4.1	FFA47R17	FFA47R17							
1.1	1180	4.1	FFA47R17	FFA47R17							
1.3	1044	4.1	FFA47R17	FFA47R17							
1.4	914	4.1	FFA47R17	FFA47R17							
1.6	808	4.1	FFA47R17	FFA47R17							
1.9	698	4.1	FFA47R17	FFA47R17							
2.1	616	4.1	FFA47R17	FFA47R17							
2.4	544	4.1	FFA47R17	FFA47R17							
2.8	466	4.1	FFA47R17	FFA47R17							
3.2	411	4.1	FFA47R17	FFA47R17							
3.6	364	4.1	FFA47R17	FFA47R17							
4.0	326	4	FFA47R17	FFA47R17							
4.6	285	4.1	FFA47R17	FFA47R17							
5.2	250	4.1	FFA47R17	FFA47R17							
6.0	219	4.1	FFA47R17	FFA47R17							
7.0	186	4.1	FFA47R17	FFA47R17							
8.0	167	4.1	FFA47R17	FFA47R17							
9.2	145	4.1	FFA47R17	FFA47R17							
10.3	129	4.1	FFA47R17	FFA47R17							
0.11	12251	5.6	FFA47R17	FFA47R17							
0.12	10619	5.6	FFA47R17	FFA47R17							
0.13	9846	5.6	FFA47R17	FFA47R17							
0.15	8534	5.6	FFA47R17	FFA47R17							
0.18	7460	5.6	FFA47R17	FFA47R17							
0.20	6536	5.6	FFA47R17	FFA47R17							
0.23	5746	5.6	FFA47R17	FFA47R17							
0.26	5022	5.6	FFA47R17	FFA47R17							
0.30	4401	5.6	FFA47R17	FFA47R17							
0.34	3883	5.6	FFA47R17	FFA47R17							
0.38	3443	5.6	FFA47R17	FFA47R17							
0.44	2976	5.6	FFA47R17	FFA47R17							
0.50	2629	5.6	FFA47R17	FFA47R17							
0.52	2519	5.6	FFA47R17	FFA47R17							
0.55	2394	5.6	FFA47R17	FFA47R17							
0.60	2172	5.6	FFA47R17	FFA47R17							
0.65	2025	5.6	FFA47R17	FFA47R17							
0.74	1770	5.6	FFA47R17	FFA47R17							
0.83	1576	5.6	FFA47R17	FFA47R17							
0.96	1363	5.6	FFA47R17	FFA47R17							
1.1	1192	5.6	FFA47R17	FFA47R17							
1.2	1061	5.6	FFA47R17	FFA47R17							
1.4	931	5.6	FFA47R17	FFA47R17							
1.6	822	5.6	FFA47R17	FFA47R17							
1.9	706	5.6	FFA47R17	FFA47R17							

选型参数表
(恒扭矩)

选型参数表
(恒扭矩)

Mamax [Nm]	n _a [r/min]	i	F _{ra} [kN]	机型号 Type size	P [kW]/4P	Mamax [Nm]	n _a [r/min]	i	F _{ra} [kN]	机型号 Type size	P [kW]/4P
600	6.2	226	8.7	FFA57R37	0.55	1500	0.07	19180	15	FFA77R37	0.12
	7.0	200	8.7	FFA57R37			FFA57R37				
	8.2	170	8.7	FFA57R37			FFA57R37				
	9.1	152	8.7	FFA57R37	FFA57R37						
	10	134	8.7	FFA57R37	FFA57R37						
	0.07	19199	8.7	FFA57R37	FFA57R37						
	0.07	17610	8.7	FFA57R37	FFA57R37						
	0.09	14992	8.7	FFA57R37	FFA57R37						
	0.10	12926	8.7	FFA57R37	FFA57R37						
	0.11	11480	8.7	FFA57R37	FFA57R37						
	0.13	10220	8.7	FFA57R37	FFA57R37						
	0.15	8933	8.7	FFA57R37	FFA57R37						
	0.16	7940	8.7	FFA57R37	FFA57R37						
	0.18	7096	8.7	FFA57R37	FFA57R37						
	0.22	6080	8.7	FFA57R37	FFA57R37						
0.25	5341	8.7	FFA57R37	FFA57R37							
0.28	4690	8.7	FFA57R37	FFA57R37							
0.32	4091	8.7	FFA57R37	FFA57R37							
0.37	3574	8.7	FFA57R37	FFA57R37							
0.42	3133	8.7	FFA57R37	FFA57R37							
0.48	2756	8.7	FFA57R37	FFA57R37							
0.54	2439	8.7	FFA57R37	FFA57R37							
0.59	3377	8.7	FFA57R37	FFA57R37							
0.45	2912	8.7	FFA57R37	FFA57R37							
0.48	2714	8.7	FFA57R37	FFA57R37							
0.55	2372	8.7	FFA57R37	FFA57R37							
0.62	2126	8.7	FFA57R37	FFA57R37							
0.80	1631	8.7	FFA57R37	FFA57R37							
0.91	1437	8.7	FFA57R37	FFA57R37							
1.0	1256	8.7	FFA57R37	FFA57R37							
1.2	1126	8.7	FFA57R37	FFA57R37							
1.3	984	8.7	FFA57R37	FFA57R37							
1.5	864	8.7	FFA57R37	FFA57R37							
1.8	722	8.7	FFA57R37	FFA57R37							
2.1	634	8.7	FFA57R37	FFA57R37							
2.5	539	8.7	FFA57R37	FFA57R37							
0.70	1884	10	FFA67R37	FFA67R37							
0.70	1884	10	FFA67R37	FFA67R37							
0.70	1884	10	FFA67R37	FFA67R37							
2.7	500	10	FFA67R37	FFA67R37							
2.9	454	10	FFA67R37	FFA67R37							
3.4	392	10	FFA67R37	FFA67R37							
4.2	333	10	FFA67R37	FFA67R37							
4.7	297	10	FFA67R37	FFA67R37							
5.3	261	10	FFA67R37	FFA67R37							
5.8	238	10	FFA67R37	FFA67R37							
7.0	200	10	FFA67R37	FFA67R37							
0.06	23042	19	FFA67R37	FFA67R37							
0.06	20462	19	FFA67R37	FFA67R37							
0.07	18238	19	FFA67R37	FFA67R37							
0.08	15877	19	FFA67R37	FFA67R37							
0.09	14099	19	FFA67R37	FFA67R37							
0.11	12205	19	FFA67R37	FFA67R37							
0.13	10433	19	FFA67R37	FFA67R37							
0.14	9381	19	FFA67R37	FFA67R37							
0.16	8142	19	FFA67R37	FFA67R37							
0.18	7100	19	FFA67R37	FFA67R37							
0.21	6273	19	FFA67R37	FFA67R37							
0.24	5510	19	FFA67R37	FFA67R37							
0.26	4954	19	FFA67R37	FFA67R37							

选型参数表
(恒扭矩)

选型参数表
(恒扭矩)

Mamax [Nm]	n _a [r/min]	F _{ra} [kN]	i	n _a [r/min]	F _{ra} [kN]	i	n _a [r/min]	F _{ra} [kN]	机型号 Type size	P [kW]/4P
3000	0.31	4245	19	0.31	4245	19	1.2	1171	28	0.18
	0.35	3721	19	1.4	1022	28	1.4	1022	28	0.75
	0.40	3244	19	1.6	898	28	1.6	898	28	1.1
	0.45	2881	19	1.8	784	28	1.8	784	28	1.5
	0.52	2576	19	2.0	690	28	2.0	690	28	2.2
	0.60	2199	19	2.3	605	28	2.3	605	28	3
	0.69	1930	19	2.6	529	28	2.6	529	28	0.12
	0.78	1709	19	3.0	467	28	3.0	467	28	0.18
	0.89	1493	19	3.5	406	28	3.5	406	28	0.37
	1.1	1300	19	3.9	363	28	3.9	363	28	0.55
	1.2	1148	19	5.0	285	28	5.0	285	28	0.75
	1.4	1010	19	5.8	245	28	5.8	245	28	0.75
	1.6	887	19	0.05	25416	47	0.05	25416	47	0.12
	1.8	780	19	0.06	21687	47	0.06	21687	47	0.18
	2.1	674	19	0.07	18963	47	0.07	18963	47	0.37
2.3	609	19	0.08	16916	47	0.08	16916	47	0.55	
2.7	515	19	0.09	14791	47	0.09	14791	47	0.75	
3.1	452	19	0.11	11433	47	0.11	11433	47	1.1	
4.1	345	19	0.13	10055	47	0.13	10055	47	1.5	
0.06	20813	28	0.15	8562	47	0.15	8562	47	0.25	
0.07	18119	28	0.17	7719	47	0.17	7719	47	0.37	
0.08	15472	28	0.20	6778	47	0.20	6778	47	0.55	
0.09	14022	28	0.22	5964	47	0.22	5964	47	0.75	
0.11	12324	28	0.25	5253	47	0.25	5253	47	1.1	
0.12	10838	28	0.29	4581	47	0.29	4581	47	1.5	
0.14	9576	28	0.38	3541	47	0.38	3541	47	2.2	
0.16	8318	28	0.46	3042	47	0.46	3042	47	3	
0.18	7328	28	0.50	2761	47	0.50	2761	47	4	
0.20	6469	28	0.59	2373	47	0.59	2373	47	0.12	
0.20	6515	28	0.67	2071	47	0.67	2071	47	0.18	
0.26	4961	28	0.76	1829	47	0.76	1829	47	0.25	
0.30	4333	28	0.87	1606	47	0.87	1606	47	0.37	
0.34	3906	28	0.99	1409	47	0.99	1409	47	0.55	
0.40	3352	28	1.1	1245	47	1.1	1245	47	0.75	
0.46	2907	28	1.3	1093	47	1.3	1093	47	1.1	
0.52	2553	28	1.5	956	47	1.5	956	47	1.5	
0.59	2245	28	1.7	839	47	1.7	839	47	2.2	
0.68	1970	28	1.9	740	47	1.9	740	47	3	
0.81	1722	28	2.2	644	47	2.2	644	47	4	
0.91	1527	28								
1.0	1327	28								

选型参数表
(恒扭矩)

选型参数表
(恒扭矩)

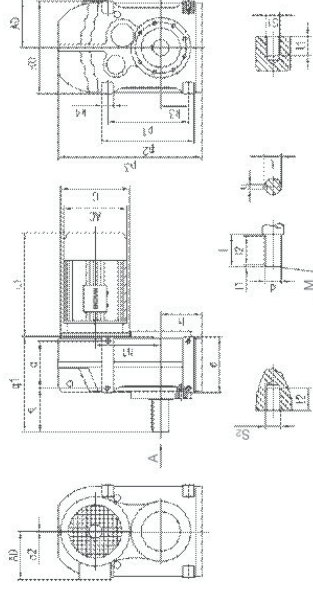
Mamax [Nm]	n _a [r/min]	F _{ra} [kN]	i	n _a [r/min]	F _{ra} [kN]	i	n _a [r/min]	F _{ra} [kN]	机型号 Type size	P [kW]/4P
7680	2.5	565	47	2.5	565	47	0.05	24448	86	0.12
	2.9	492	47	2.9	492	47	0.06	22289	86	0.18
	3.3	438	47	3.3	438	47	0.07	19018	86	0.25
	3.9	372	47	3.9	372	47	0.08	16630	86	0.37
	4.3	335	47	4.3	335	47	0.09	14532	86	0.55
	0.05	24448	86	0.10	12896	86	0.10	12896	86	0.75
	0.06	22289	86	0.11	11642	86	0.11	11642	86	1.1
	0.07	19018	86	0.13	10251	86	0.13	10251	86	1.5
	0.08	16630	86	0.15	8818	86	0.15	8818	86	2.2
	0.09	14532	86	0.17	7688	86	0.17	7688	86	3
	0.10	12896	86	0.20	6772	86	0.20	6772	86	4
	0.11	11642	86	0.22	5957	86	0.22	5957	86	5.5
	0.13	10251	86	0.27	5183	86	0.27	5183	86	7.5
	0.15	8818	86	0.30	4559	86	0.30	4559	86	11
	0.17	7688	86	0.36	3876	86	0.36	3876	86	18000
0.20	6772	86	0.41	3410	86	0.41	3410	86	0.04	
0.22	5957	86	0.46	3035	86	0.46	3035	86	0.05	
0.27	5183	86	0.52	2668	86	0.52	2668	86	0.06	
0.30	4559	86	0.59	2354	86	0.59	2354	86	0.07	
0.36	3876	86	0.69	2034	86	0.69	2034	86	0.07	
0.41	3410	86	0.79	1781	86	0.79	1781	86	0.08	
0.46	3035	86	0.87	1604	86	0.87	1604	86	0.08	
0.52	2668	86	1.0	1398	86	1.0	1398	86	0.09	
0.59	2354	86	1.2	1227	86	1.2	1227	86	0.10	
0.69	2034	86	1.3	1080	86	1.3	1080	86	0.10	
0.79	1781	86	1.6	918	86	1.6	918	86	0.11	
0.87	1604	86	1.8	810	86	1.8	810	86	0.12	
1.0	1398	86	2.0	718	86	2.0	718	86	0.13	
1.2	1227	86	2.2	639	86	2.2	639	86	0.14	
1.3	1080	86	2.6	549	86	2.6	549	86	0.14	
1.6	918	86	2.9	495	86	2.9	495	86	0.15	
1.8	810	86								
2.0	718	86								
2.2	639	86								
2.6	549	86								
2.9	495	86								

选型参数表
(恒扭矩)

Mamax [Nm]	n _a [r/min]	F _{ra} [kN]	i	机型号 Type size	P [kW]/4P	Mamax [Nm]	n _a [r/min]	F _{ra} [kN]	i	机型号 Type size	P [kW]/4P
18000	0.58	2411	95	EFAI57R97	1.5	18000	2.9	503	95	EFAI57R97	7.5
	0.64	2171	95	EFI57R97			3.3	446	95	EFI57R97	
	0.74	1940	95	EFAF157R97			4.2	346	95	EFAF157R97	
	0.88	1623	95	EFI57R97	2.2		4.9	297	95	EFI57R97	11
	1.13	1267	95	EFAI57R97			5.4	268	95	EFI57R97	
	1.26	1133	95	EFAF157R97			6.4	227	95	EFAI57R97	
	1.6	923	95	EFAF157R97	3		7.4	198	95	EFI57R97	15
	1.8	819	95	EFI57R97			7.5	196	95	EFAF157R97	
	1.9	740	95	EFI57R97			7.5	196	95	EFI57R97	
	2.2	662	95	EFAI57R97	4		7.5	196	95	EFAF157R97	18.5
	2.6	561	95	EFI57R97			7.5	196	95	EFI57R97	
							7.5	196	95	EFI57R97	

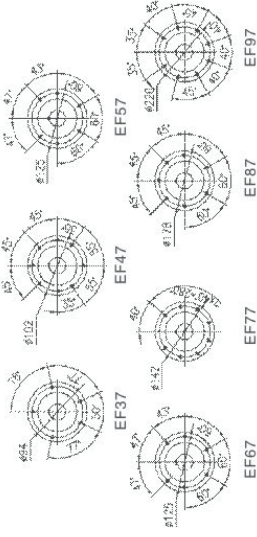
Selection Table
(Constant Torque)

EF37-157
安装结构尺寸



EF37-157
Mounting Dimensional Description

A 向法兰安装结构尺寸 (Fig.A Mounting Dimension)



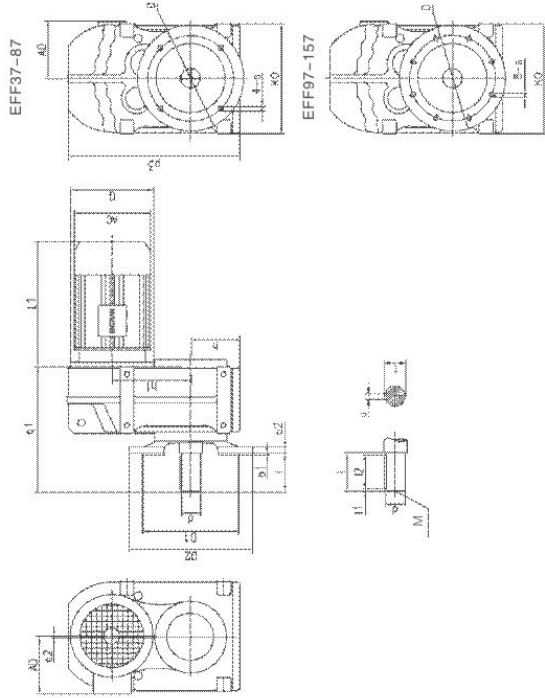
规格 Specification	q ₁ S1	q t ₁	a u	h ₁ t	h l ₁	e l ₂	P ₂ d	P ₁ M	k ₃ S2	k ₄ t ₄	k ₀ a ₂	G	电机尺寸 Motor Size		
													AC	LI	
EF37	160 M8	72.5 11	77 8	112 28	5 5	95 40	252 50	135 φ25K6	115 M8	31 M8	20 11	165 /	φ120		
EF47	193 M10	91 15	93 8	128.1 33	8 3.5	109 50	269 60	165 φ30K6	145 M10	43 M8	20 11	180 /	φ120		
EF57	220 M12	104.5 17	102 10	136 38	93 7	126 56	317 70	195 φ35K6	170 M12	55 M12	25 17	200 /	φ160		
EF67	242 M16	118.5 17	112 12	159.5 43	97 5	131 80	343 80	215 φ40K6	190 M16	60 M16	25 17	212 /	φ160		
EF77	294 M16	137.5 26	140 14	200 53.5	121 10	175 80	426 100	275 φ50K6	240 M16	70 M12	35 17	270 /	φ200		
EF87	344 M16	163 26	165 18	246.7 64	152 5	195 110	531 120	350 φ60m6	310 M20	100 M20	40 26	330 /	φ250		
EF97	415 M20	189.5 28	205 20	285 74.5	178 7.5	240 140	623 140	400 φ70m6	350 M20	120 M16	50 26	400 /	φ300		
EF107	484 M24	241.5 32	220 25	332.4 95	200 5	260 160	717 170	450 φ90m6	400 M24	125 M24	50 /	450 /	φ350		
EF127	585 M30	291 45	270 28	382.6 116	236 15	316 180	856 210	520 φ110m6	450 M24	142 /	70 /	530 /	φ450		
EF157	682 M36	325 55	310 32	447 127	286 5	364 200	1021 210	620 φ120m6	540 M24	170 /	80 /	660 /	φ550		

注：电机需方配或配特殊电机时需加联接法兰（见附录D）

Note: When equipping the user's motor or the special one, the flange is required to be connected. (Please see appendix D)

EFF37-157
安装结构尺寸

EFF37-157
Mounting Dimensional Description



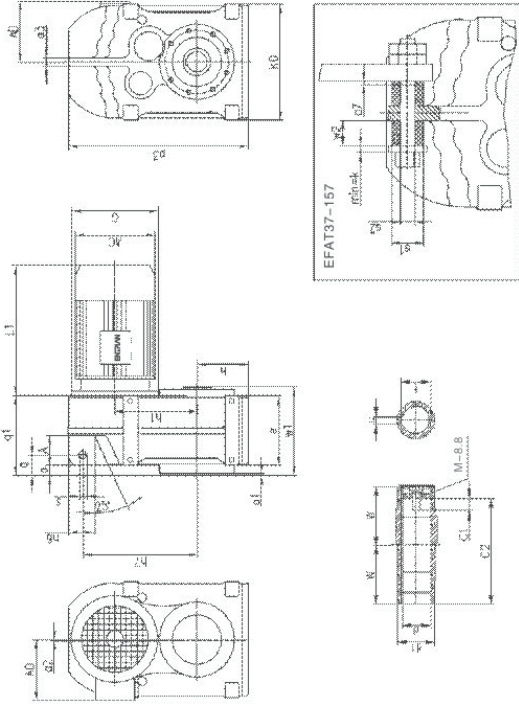
规格 Specification	q ₁ s	o ₂ D	o ₁ K0	d	u	D1	D2	h ₁ l ₂	h	p ₂ M	G	电机尺寸 Motor Size	
												AC	L1
EFF37	184 Φ9	10 Φ130	3.5 165	Φ25K6 8	Φ110J6 28	Φ160 5	Φ120 /	112 40	76 50	252 M10	Φ120	AC	L1
EFF47	218 Φ11	12 Φ130	3.5 180	Φ30K6 8	Φ130J6 33	Φ200 3.5	Φ120 /	128.1 50	77 60	269 M10	Φ120	AC	L1
EFF57	243 Φ13.5	15 Φ215	4 200	Φ35K6 10	Φ180J6 38	Φ250 7	Φ160 /	136 56	93 70	317 M12	Φ160	AC	L1
EFF67	264 Φ13.5	15 Φ215	4 212	Φ40K6 12	Φ180J6 43	Φ250 5	Φ160 /	159.5 70	97 80	343 M16	Φ160	AC	L1
EFF77	330 Φ13.5	16 Φ265	4 270	Φ50K6 14	Φ230J6 53.5	Φ300 10	Φ200 /	200 80	121 100	426 M16	Φ200	AC	L1
EFF87	374 Φ17.5	18 Φ300	5 330	Φ60m6 18	Φ250h6 64	Φ350 5	Φ250 /	246.7 110	152 120	531 M20	Φ250	AC	L1
EFF97	455 Φ17.5	22 Φ400	5 400	Φ70m6 20	Φ350h6 74.5	Φ450 7.5	Φ300 /	285 125	178 140	623 M20	Φ300	AC	L1
EFF107	523 Φ17.5	22 Φ400	5 450	Φ90m6 25	Φ350h6 95	Φ450 5	Φ350 /	332.4 160	200 170	717 M24	Φ350	AC	L1
EFF127	634 Φ17.5	25 Φ500	5 530	Φ110m6 28	Φ450h6 116	Φ550 15	Φ450 10	382.6 180	236 210	856 M24	Φ450	AC	L1
EFF157	725 Φ22	28 Φ600	6 660	Φ120m6 32	Φ550h6 127	Φ660 5	Φ550 15	447 200	286 210	1021 M24	Φ550	AC	L1

注：电机需方配或配特殊电机时需加联接法兰（见附录D）

Note: When equipping the user's motor or the special one, the flange is required to be connected. (Please see appendix D)

EFA37-157
安装结构尺寸

EFA37-157
Mounting Dimensional Description



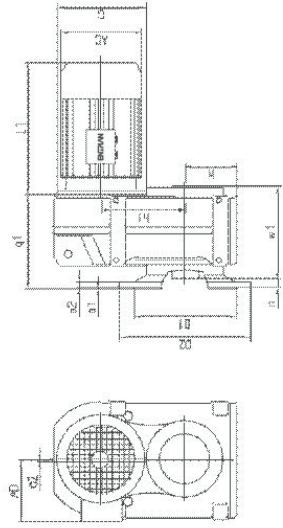
螺栓、螺母、垫圈不在标准供货范围内

规格 Specification	q ₁ s	A d ₁	h ₁ c ₁	h ₂ s	h ₃ u	h ₄ t	a ₁ s ₁	e s ₂	W ₁ k	P ₁ W ₂	a ₃ a ₄	K0 G	c ₂ M	电机尺寸 Motor Size		
														AC	L1	
EFA37	110 /	31.5 Φ30H7	46 Φ45	15 17	158 17	30 14	112 8	76 33.3	2.5 Φ40	95 Φ12.5 ^{AS}	123 5	252 20	165 Φ120	105 M10×25	AC	L1
EFA47	133 /	32 Φ35H7	64 Φ50	12 75	170 22	170 10	128.1 38.3	77 Φ40	3 Φ12.5 ^{AS}	109 Φ12.5 ^{AS}	153 5	269 20	180 Φ120	132 M12×30	AC	L1
EFA57	150 /	40.5 Φ40H7	60 Φ55	19.5 83	198 29	31 14	136 12	93 43.3	3 Φ40	126 Φ12.5 ^{AS}	170 5	317 20	200 Φ160	142 M16×40	AC	L1
EFA67	161 /	41 Φ40H7	65 Φ70	21 105	218 32	40 22	159.5 14	97 53.8	3.5 Φ60	131 Φ21 ^{AS}	184 10	212 30	156 Φ200	166 M16×45	AC	L1
EFA77	193 /	50 Φ50H7	69 Φ70	28 105	278 32	49 22	200 14	121 53.8	4 Φ60	175 Φ21 ^{AS}	213 10	270 30	183 Φ200	183 M16×45	AC	L1
EFA87	224 /	62 Φ60H7	79 Φ85	32 120	346 36	57 22	246.7 18	152 64.4	4 Φ60	195 Φ21 ^{AS}	243 10	301 40	210 Φ350	210 M20×50	AC	L1
EFA97	274 /	70 Φ70H7	104 Φ118	32 175	395 40	88 25	285 95.4	178 Φ60	4 Φ60	240 Φ25 ^{AS}	303 12	400 40	270 Φ300	270 M20×50	AC	L1
EFA107	312 /	88 Φ90H7	100 Φ118	57 175	485 40	108 25	332.4 160	200 170	2.5 Φ60	260 Φ25 ^{AS}	353 12	450 6	313 Φ350	313 M24×60	AC	L1
EFA127	373 /	110 Φ100H7	125 Φ135	66 205	550 38	108 33	382.6 28	236 106.4	2.5 Φ100	316 Φ32 ^{AS}	413 15	373 9	373 Φ450	373 M24×60	AC	L1
EFA157	455 15	150 Φ120H7	140 Φ155	98 250	660 36	170 Φ33	447 127.4	286 Φ120	7 Φ32 ^{AS}	364 Φ32 ^{AS}	503 15	460 9	460 Φ550	460 M24×60	AC	L1

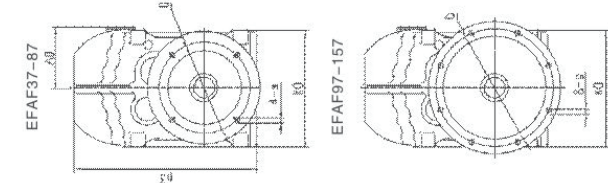
注：电机需方配或配特殊电机时需加联接法兰（见附录D）

Note: When equipping the user's motor or the special one, the flange is required to be connected. (Please see appendix D)

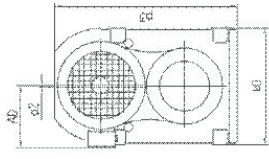
EFAF37-157
安装结构尺寸



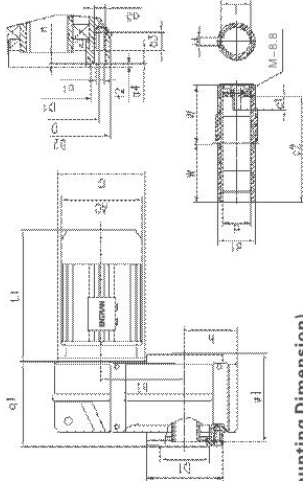
EFAF37-157
Mounting Dimensional Description



EFAZ37-157
安装结构尺寸



EFAZ37-157
Mounting Dimensional Description

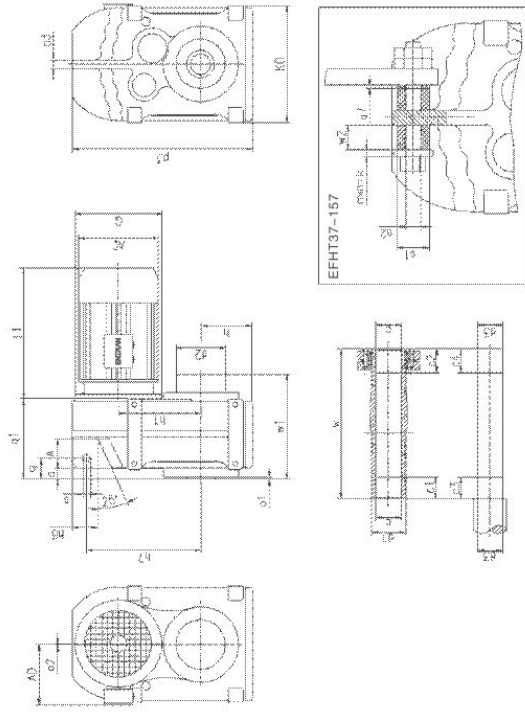


A 向法兰安装结构尺寸 (Fig.A Mounting Dimension)

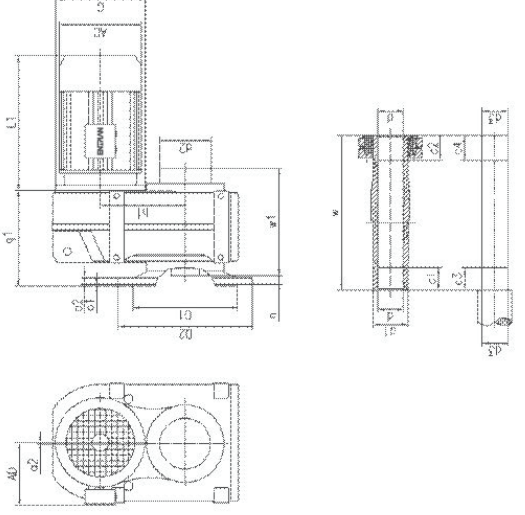


规格 Specification	q1		h	h1	h2	h3	h4	h5	h6	h7	h8	h9	h10	h11	h12	h13	h14	h15	h16	h17	h18	h19	h20	h21	h22	h23	h24	h25	h26	h27	h28	h29	h30	h31	h32	h33	h34	h35	h36	h37	h38	h39	h40	h41	h42	h43	h44	h45	h46	h47	h48	h49	h50	h51	h52	h53	h54	h55	h56	h57	h58	h59	h60	h61	h62	h63	h64	h65	h66	h67	h68	h69	h70	h71	h72	h73	h74	h75	h76	h77	h78	h79	h80	h81	h82	h83	h84	h85	h86	h87	h88	h89	h90	h91	h92	h93	h94	h95	h96	h97	h98	h99	h100	h101	h102	h103	h104	h105	h106	h107	h108	h109	h110	h111	h112	h113	h114	h115	h116	h117	h118	h119	h120	h121	h122	h123	h124	h125	h126	h127	h128	h129	h130	h131	h132	h133	h134	h135	h136	h137	h138	h139	h140	h141	h142	h143	h144	h145	h146	h147	h148	h149	h150	h151	h152	h153	h154	h155	h156	h157	h158	h159	h160	h161	h162	h163	h164	h165	h166	h167	h168	h169	h170	h171	h172	h173	h174	h175	h176	h177	h178	h179	h180	h181	h182	h183	h184	h185	h186	h187	h188	h189	h190	h191	h192	h193	h194	h195	h196	h197	h198	h199	h200	h201	h202	h203	h204	h205	h206	h207	h208	h209	h210	h211	h212	h213	h214	h215	h216	h217	h218	h219	h220	h221	h222	h223	h224	h225	h226	h227	h228	h229	h230	h231	h232	h233	h234	h235	h236	h237	h238	h239	h240	h241	h242	h243	h244	h245	h246	h247	h248	h249	h250	h251	h252	h253	h254	h255	h256	h257	h258	h259	h260	h261	h262	h263	h264	h265	h266	h267	h268	h269	h270	h271	h272	h273	h274	h275	h276	h277	h278	h279	h280	h281	h282	h283	h284	h285	h286	h287	h288	h289	h290	h291	h292	h293	h294	h295	h296	h297	h298	h299	h300	h301	h302	h303	h304	h305	h306	h307	h308	h309	h310	h311	h312	h313	h314	h315	h316	h317	h318	h319	h320	h321	h322	h323	h324	h325	h326	h327	h328	h329	h330	h331	h332	h333	h334	h335	h336	h337	h338	h339	h340	h341	h342	h343	h344	h345	h346	h347	h348	h349	h350	h351	h352	h353	h354	h355	h356	h357	h358	h359	h360	h361	h362	h363	h364	h365	h366	h367	h368	h369	h370	h371	h372	h373	h374	h375	h376	h377	h378	h379	h380	h381	h382	h383	h384	h385	h386	h387	h388	h389	h390	h391	h392	h393	h394	h395	h396	h397	h398	h399	h400	h401	h402	h403	h404	h405	h406	h407	h408	h409	h410	h411	h412	h413	h414	h415	h416	h417	h418	h419	h420	h421	h422	h423	h424	h425	h426	h427	h428	h429	h430	h431	h432	h433	h434	h435	h436	h437	h438	h439	h440	h441	h442	h443	h444	h445	h446	h447	h448	h449	h450	h451	h452	h453	h454	h455	h456	h457	h458	h459	h460	h461	h462	h463	h464	h465	h466	h467	h468	h469	h470	h471	h472	h473	h474	h475	h476	h477	h478	h479	h480	h481	h482	h483	h484	h485	h486	h487	h488	h489	h490	h491	h492	h493	h494	h495	h496	h497	h498	h499	h500	h501	h502	h503	h504	h505	h506	h507	h508	h509	h510	h511	h512	h513	h514	h515	h516	h517	h518	h519	h520	h521	h522	h523	h524	h525	h526	h527	h528	h529	h530	h531	h532	h533	h534	h535	h536	h537	h538	h539	h540	h541	h542	h543	h544	h545	h546	h547	h548	h549	h550	h551	h552	h553	h554	h555	h556	h557	h558	h559	h560	h561	h562	h563	h564	h565	h566	h567	h568	h569	h570	h571	h572	h573	h574	h575	h576	h577	h578	h579	h580	h581	h582	h583	h584	h585	h586	h587	h588	h589	h590	h591	h592	h593	h594	h595	h596	h597	h598	h599	h600	h601	h602	h603	h604	h605	h606	h607	h608	h609	h610	h611	h612	h613	h614	h615	h616	h617	h618	h619	h620	h621	h622	h623	h624	h625	h626	h627	h628	h629	h630	h631	h632	h633	h634	h635	h636	h637	h638	h639	h640	h641	h642	h643	h644	h645	h646	h647	h648	h649	h650	h651	h652	h653	h654	h655	h656	h657	h658	h659	h660	h661	h662	h663	h664	h665	h666	h667	h668	h669	h670	h671	h672	h673	h674	h675	h676	h677	h678	h679	h680	h681	h682	h683	h684	h685	h686	h687	h688	h689	h690	h691	h692	h693	h694	h695	h696	h697	h698	h699	h700	h701	h702	h703	h704	h705	h706	h707	h708	h709	h710	h711	h712	h713	h714	h715	h716	h717	h718	h719	h720	h721	h722	h723	h724	h725	h726	h727	h728	h729	h730	h731	h732	h733	h734	h735	h736	h737	h738	h739	h740	h741	h742	h743	h744	h745	h746	h747	h748	h749	h750	h751	h752	h753	h754	h755	h756	h757	h758	h759	h760	h761	h762	h763	h764	h765	h766	h767	h768	h769	h770	h771	h772	h773	h774	h775	h776	h777	h778	h779	h780	h781	h782	h783	h784	h785	h786	h787	h788	h789	h790	h791	h792	h793	h794	h795	h796	h797	h798	h799	h800	h801	h802	h803	h804	h805	h806	h807	h808	h809	h810	h811	h812	h813	h814	h815	h816	h817	h818	h819	h820	h821	h822	h823	h824	h825	h826	h827	h828	h829	h830	h831	h832	h833	h834	h835	h836	h837	h838	h839	h840	h841	h842	h843	h844	h845	h846	h847	h848	h849	h850	h851	h852	h853	h854	h855	h856	h857	h858	h859	h860	h861	h862	h863	h864	h865	h866	h867	h868	h869	h870	h871	h872	h873	h874	h875	h876	h877	h878	h879	h880	h881	h882	h883	h884	h885	h886	h887	h888	h889	h890	h891	h892	h893	h894	h895	h896	h897	h898	h899	h900	h901	h902	h903	h904	h905	h
---------------------	----	--	---	----	----	----	----	----	----	----	----	----	-----	-----	-----	-----	-----	-----	-----	-----	-----	-----	-----	-----	-----	-----	-----	-----	-----	-----	-----	-----	-----	-----	-----	-----	-----	-----	-----	-----	-----	-----	-----	-----	-----	-----	-----	-----	-----	-----	-----	-----	-----	-----	-----	-----	-----	-----	-----	-----	-----	-----	-----	-----	-----	-----	-----	-----	-----	-----	-----	-----	-----	-----	-----	-----	-----	-----	-----	-----	-----	-----	-----	-----	-----	-----	-----	-----	-----	-----	-----	-----	-----	-----	-----	-----	-----	-----	-----	-----	-----	-----	------	------	------	------	------	------	------	------	------	------	------	------	------	------	------	------	------	------	------	------	------	------	------	------	------	------	------	------	------	------	------	------	------	------	------	------	------	------	------	------	------	------	------	------	------	------	------	------	------	------	------	------	------	------	------	------	------	------	------	------	------	------	------	------	------	------	------	------	------	------	------	------	------	------	------	------	------	------	------	------	------	------	------	------	------	------	------	------	------	------	------	------	------	------	------	------	------	------	------	------	------	------	------	------	------	------	------	------	------	------	------	------	------	------	------	------	------	------	------	------	------	------	------	------	------	------	------	------	------	------	------	------	------	------	------	------	------	------	------	------	------	------	------	------	------	------	------	------	------	------	------	------	------	------	------	------	------	------	------	------	------	------	------	------	------	------	------	------	------	------	------	------	------	------	------	------	------	------	------	------	------	------	------	------	------	------	------	------	------	------	------	------	------	------	------	------	------	------	------	------	------	------	------	------	------	------	------	------	------	------	------	------	------	------	------	------	------	------	------	------	------	------	------	------	------	------	------	------	------	------	------	------	------	------	------	------	------	------	------	------	------	------	------	------	------	------	------	------	------	------	------	------	------	------	------	------	------	------	------	------	------	------	------	------	------	------	------	------	------	------	------	------	------	------	------	------	------	------	------	------	------	------	------	------	------	------	------	------	------	------	------	------	------	------	------	------	------	------	------	------	------	------	------	------	------	------	------	------	------	------	------	------	------	------	------	------	------	------	------	------	------	------	------	------	------	------	------	------	------	------	------	------	------	------	------	------	------	------	------	------	------	------	------	------	------	------	------	------	------	------	------	------	------	------	------	------	------	------	------	------	------	------	------	------	------	------	------	------	------	------	------	------	------	------	------	------	------	------	------	------	------	------	------	------	------	------	------	------	------	------	------	------	------	------	------	------	------	------	------	------	------	------	------	------	------	------	------	------	------	------	------	------	------	------	------	------	------	------	------	------	------	------	------	------	------	------	------	------	------	------	------	------	------	------	------	------	------	------	------	------	------	------	------	------	------	------	------	------	------	------	------	------	------	------	------	------	------	------	------	------	------	------	------	------	------	------	------	------	------	------	------	------	------	------	------	------	------	------	------	------	------	------	------	------	------	------	------	------	------	------	------	------	------	------	------	------	------	------	------	------	------	------	------	------	------	------	------	------	------	------	------	------	------	------	------	------	------	------	------	------	------	------	------	------	------	------	------	------	------	------	------	------	------	------	------	------	------	------	------	------	------	------	------	------	------	------	------	------	------	------	------	------	------	------	------	------	------	------	------	------	------	------	------	------	------	------	------	------	------	------	------	------	------	------	------	------	------	------	------	------	------	------	------	------	------	------	------	------	------	------	------	------	------	------	------	------	------	------	------	------	------	------	------	------	------	------	------	------	------	------	------	------	------	------	------	------	------	------	------	------	------	------	------	------	------	------	------	------	------	------	------	------	------	------	------	------	------	------	------	------	------	------	------	------	------	------	------	------	------	------	------	------	------	------	------	------	------	------	------	------	------	------	------	------	------	------	------	------	------	------	------	------	------	------	------	------	------	------	------	------	------	------	------	------	------	------	------	------	------	------	------	------	------	------	------	------	------	------	------	------	------	------	------	------	------	------	------	------	------	------	------	------	------	------	------	------	------	------	------	------	------	------	------	------	------	------	------	------	------	------	------	------	------	------	------	------	------	------	------	------	------	------	------	------	------	------	------	------	------	------	------	------	------	------	------	------	------	------	------	------	------	------	------	------	------	------	------	------	------	------	------	------	------	------	------	------	------	------	------	------	------	------	------	------	------	------	------	------	------	------	------	------	------	------	------	------	------	------	------	------	------	------	------	------	------	------	---

EFH37-157
安装结构尺寸

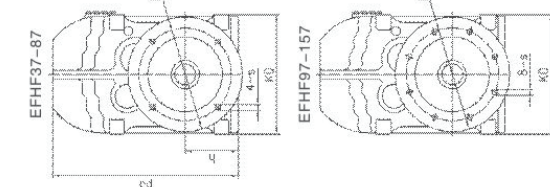


EFH37-157
Mounting Dimensional Description



EFH37-157
安装结构尺寸

EFHF37-157
Mounting Dimensional Description



螺栓、螺母、垫圈不在标准供货范围内

规格 Specification	q ₁ P ₁	h h ₁	h ₂ h ₁	w w ₁	c ₁ c ₂	c ₃ c ₄	q A	d ₂ d ₁	d d ₁	a a ₁	s a ₂	a ₃ K ₀	s ₁ s ₂	k w ₂	a ₄ G	电机尺寸 Motor Size			
																AC	AD	L1	
EFH37	110 252	76 112	158 252	146 155	31 20	25 36	31.5 46	0.75 0.45	0.30H7 0.30h6	15 0.5	0.14 /	12 165	0.40 12.5 ^{±0.05}	5 20	1 0.120	1			
EFH47	133 269	77 128.1	170 269	177 184	32 27	25 37	0.83 0.50	0.35H7 0.35h6	0.35H7 0.40h6	12 19.5	0.14 /	12 180	0.40 12.5 ^{±0.05}	5 20	1.8 2.4	1			
EFH57	150 317	93 136	198 317	195 200	26 20	25 31	0.83 0.55	0.40H7 0.40h6	0.40H7 0.40h6	14 1	0.14 /	14 200	0.40 12.5 ^{±0.05}	5 20	0.160	1			
EFH67	161 343	97 159.5	218 343	208 215.5	38 20	25 43	0.93 0.55	0.40H7 0.40h6	0.40H7 0.40h6	21 1	0.14 /	16 212	0.40 12.5 ^{±0.05}	5 20	0.160	1			
EFH77	193 426	121 200	278 426	241 249	36 41	35 41	0.50 0.70	0.50H7 0.50h6	0.50H7 0.50h6	28 1	0.22 /	20 270	0.60 13.5 ^{±0.05}	10 30	3.2 0.200	1			
EFH87	224 531	152 246.7	346 531	281 291	41 40	45 46	0.62 0.85	0.65H7 0.65h6	0.65H7 0.65h6	32 1	0.22 /	26 330	0.60 0.21 ^{±0.05}	10 30	4.5 0.250	1			
EFH97	274 623	178 285	395 623	345 357	55 50	60 60	0.70 0.95	0.75H7 0.75h6	0.75H7 0.75h6	34 1	0.26 /	30 400	0.80 0.25 ^{±0.05}	12 40	5 0.300	1			
EFH107	312 717	200 332.4	485 717	405 420	65 70	88 80	0.88 1.00	0.95H7 0.95h6	0.95H7 0.95h6	57 2.5	0.26 /	46 450	0.80 0.25 ^{±0.05}	12 40	6 0.350	1			
EFH127	373 856	236 382.6	550 856	485 502	85 70	110 95	1.10 1.25	1.05H7 1.05h6	1.05H7 1.05h6	66 2.5	0.33 /	50 530	1.00 0.92 ^{±0.05}	15 60	9 0.450	1			
EFH157	455 1021	286 447	660 1021	580 598	90 100	150 140	0.275 0.155	0.125H7 0.125h6	0.125H7 0.125h6	98 7	0.33 15	45 660	0.120 0.32 ^{±0.05}	15 60	9 0.550	1			

注：电机需方配特殊电机时需加链接法兰（见附录D）

Note: When equipping the user's motor or the special one, the flange is required to connected. (Please see appendix D)

规格 Specification	q ₁ P ₁	o ₁ o ₂	h h ₁	n s	K ₀ D	D ₁ D ₂	d ₂ d ₁	d d ₁	w w ₁	c ₁ c ₂	c ₃ c ₄	a ₂ G	电机尺寸 Motor Size		
													AC	AD	L1
EFHF37	138 252	3.5 10	76 112	24 09	165 0.130	110.6 160	0.75 0.45	0.30H7 0.30h6	146 155	20 31	25 36	/			
EFHF47	162 269	3.5 12	77 128.1	25 11	180 0.165	130.6 200	0.83 0.50	0.35H7 0.35h6	177 184	20 32	25 37	/			
EFHF57	177 317	4 15	93 136	23.5 13.5	200 0.215	180.6 250	0.83 0.55	0.40H7 0.40h6	195 200	20 26	25 31	/			
EFHF67	188 343	4 15	97 159.5	23 13.5	212 0.215	180.6 250	0.83 0.55	0.40H7 0.40h6	208 215.5	20 38	25 43	/			
EFHF77	234 426	4 16	121 200	37 13.5	270 0.265	230.6 300	0.114 0.70	0.50H7 0.50h6	241 249	30 36	35 41	/			
EFHF87	259 531	5 18	152 246.7	30 17.5	330 0.300	250.6 350	0.159 0.85	0.65H7 0.65h6	281 291	40 41	45 46	/			
EFHF97	321 623	5 22	178 285	41.5 17.5	400 0.400	350.6 450	0.174 0.95	0.75H7 0.75h6	345 357	50 55	60 60	/			
EFHF107	358 717	5 22	200 332.4	41 17.5	450 0.400	350.6 450	0.200 0.118	0.95H7 0.95h6	405 420	60 65	70 75	/			
EFHF127	429 856	5 25	236 382.6	51 38.2	530 0.500	450.6 550	0.233 0.135	1.05H7 1.05h6	485 502	70 85	80 95	10 450			
EFHF157	521 1021	6 28	286 447	60 22	660 0.600	550.6 660	0.275 0.155	0.125H7 0.125h6	580 598	80 90	90 100	15 0.550			

注：电机需方配特殊电机时需加链接法兰（见附录D）

Note: When equipping the user's motor or the special one, the flange is required to connected. (Please see appendix D)

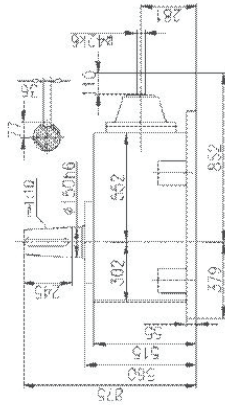
1000 - 1500 吨叶轮给料机减速机

型号: EYJS-B/A(输入轴型) EYJS-B/B(电机型)

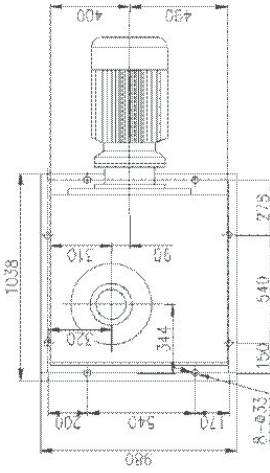
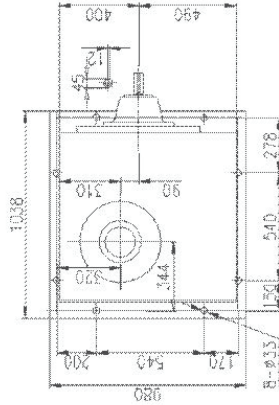
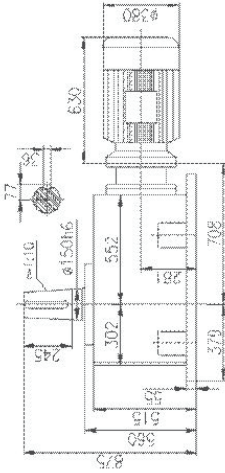
主要技术参数:

- 1. 输入功率: 22kw
- 2. 输入转速: 1470r/min
- 3. 公称速比: 120
- 4. 输出扭矩: 17000N.m
- 5. 承载能力: 40000N.m
- 6. 轴向承载能力: 不大于 40000N

输入轴外形及安装尺寸:



电机外形及安装尺寸:



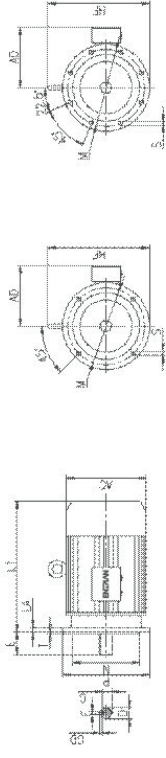
Y₂ 系列电机技术参数 Technical Data of Y₂ Series Motors

型号 Type	额定功率 Rated power/kW	满载时 Full load			堵转电流 Blocked current	堵转转矩 Blocked torque	最大转矩 Max torque	转动惯量 Moment of inertia / (kg·m ²)	净重 Weight / kg
		转速 Speed / (r/min)	电流 Current / A	效率 Eff (%)					
同步转速 3000r/min 2 极 Synchronous Speed 3000r/min 2P									
Y2-631-2	0.18	2720	0.53	65.0	0.80	2.2	—	—	—
Y2-632-2	0.25		0.69	66.0	0.81	2.2	—	—	—
Y2-711-2	0.37	2740	0.99	70.0	0.81	2.2	—	—	—
Y2-712-2	0.55		1.4	73.0	0.82	2.3	—	—	—
Y2-801-2	0.75	2830	1.83	75.0	0.83	2.2	0.00075	16	
Y2-802-2	1.1		2.55	77.0	0.84	2.2	0.00090	17	
Y2-90S-2	1.5	2840	3.40	79.0	0.84	2.2	0.0012	22	
Y2-90L-2	2.2		4.8	81.0	0.85	2.2	0.0014	25	
Y2-100L-2	3.0	2870	6.31	83.0	0.87	2.2	0.0029	33	
Y2-112M-2	4.0	2890	8.23	85.0	0.88	2.2	0.0055	45	
Y2-132S1-2	5.5	2900	11.18	86.0	0.88	2.2	0.0109	64	
Y2-132S2-2	7.5		15.06	87.0	0.89	2.2	0.0126	70	
Y2-160M1-2	11	2930	21.35	88.0	0.89	2.3	0.0377	117	
Y2-160M2-2	15		28.78	89.0	0.90	2.0	0.0449	125	
Y2-160L-2	18.5		34.72	90.0	0.91	2.0	0.055	147	
Y2-180M-2	22	2940	41.28	90.5	0.90	2.0	0.075	180	
Y2-200L1-2	30		55.37	91.2	0.90	2.0	0.124	240	
Y2-200L2-2	37	2950	67.92	92.0	0.90	2.0	0.139	255	
Y2-225M-2	45		82.16	92.3	0.91	2.0	0.233	309	
Y2-250M-2	55	2970	100.1	92.5	0.91	2.0	0.312	403	
Y2-280S-2	75		134.0	93.2	0.91	2.0	0.597	544	
Y2-280M-2	90		160.27	93.8	0.91	2.0	0.875	620	
Y2-315S-2	110		195.46	94.0	0.91	2.0	1.18	980	
Y2-315M-2	132		233.3	94.5	0.91	2.0	1.82	1080	
Y2-315L1-2	160	2980	279.44	94.6	0.92	2.2	2.08	1160	
Y2-315L2-2	200		347.83	94.8	0.92	2.2	2.41	1190	
Y2-355M-2	250		432.5	95.3	0.92	2.2	3.56	1760	
Y2-355L-2	315		543.25	95.6	0.92	2.2	4.16	1850	

型号 Type	额定功率 Rated power/kW	满载时 Full load			堵转电流 Blocked current 额定电流 Rated current	堵转转矩 Blocked torque 额定转矩 Rated torque	最大转矩 Max torque 额定转矩 Rated torque	转动惯量 Moment of inertia (/kg·m ²)	净重 Weight /kg	
		转速 Speed /(r/min)	电流 Current /A	效率 Eff (%)						功率因数 Power factor
同步转速 1500r/min 4 极 Synchronous Speed 1500r/min 4P										
Y2-631-4	0.12	1310	0.44	57.0	0.72	4.4	—	—		
Y2-632-4	0.18		0.62	60.0	0.73		—	—		
Y2-711-4	0.25	1330	0.79	65.0	0.74	5.2	—	—		
Y2-712-4	0.37		1.12	67.0	0.75		—	—		
Y2-801-4	0.55	1390	1.57	71.0	0.75	5.2	0.0018	17		
Y2-802-4	0.75		2.03	73.0	0.77	6.0	0.0021	18		
Y2-90S-4	1.1	1400	2.82	75.0	0.79		0.0021	22		
Y2-90L-4	1.5		3.7	78.0	0.81		0.0027	27		
Y2-100L1-4	2.2	1430	5.16	80.0	0.81		0.0054	34		
Y2-100L2-4	3.0		6.78	82.0	0.82	7.0	0.0067	38		
Y2-112M-4	4.0	1440	8.83	84.0	0.82		0.0095	43		
Y2-132S-4	5.5		11.7	85.0	0.83		0.0214	68		
Y2-132M-4	7.5	1460	15.6	87.0	0.84		0.0296	81		
Y2-160M-4	11		22.35	88.0		7.5	0.0747	123		
Y2-160L-4	15	1480	30.14	89.0	0.85		0.0918	144		
Y2-180M-4	18.5		36.47	90.5			0.139	182		
Y2-180L-4	22	1470	43.14	91.0			0.158	190		
Y2-200L-4	30		57.63	92.0	0.86		0.262	270		
Y2-225S-4	37	1480	69.89	92.5		7.2	0.406	284		
Y2-225M-4	45		95.54	92.8			0.469	320		
Y2-250M-4	55	1490	103.1	93.0	0.87		0.66	427		
Y2-280S-4	75		139.7	93.8			1.12	562		
Y2-280M-4	90	1490	166.93	94.2			1.46	667		
Y2-315S-4	110		201.06	94.5			3.11	1000		
Y2-315M-4	132	1490	240.57	94.8	0.88		3.62	1100		
Y2-315L1-4	160		287.95	94.9	0.89		4.13	1160		
Y2-315L2-4	200		358.8	95.0		6.9	4.94	1270		
Y2-355M-4	250		442.12	95.3	0.90		5.67	1700		
Y2-355L-4	315		555.32	95.6			6.66	1850		

型号 Type	额定功率 Rated power/kW	满载时 Full load			堵转电流 Blocked current 额定电流 Rated current	堵转转矩 Blocked torque 额定转矩 Rated torque	最大转矩 Max torque 额定转矩 Rated torque	转动惯量 Moment of inertia (/kg·m ²)	净重 Weight /kg	
		转速 Speed /(r/min)	电流 Current /A	效率 Eff (%)						功率因数 Power factor
同步转速 1000r/min 6 极 Synchronous Speed 1000r/min 6P										
Y2-711-6	0.18	850	0.74	56.0	0.66	—	—	—		
Y2-712-6	0.25	850	0.95	59.0	0.68	—	—	—		
Y2-801-6	0.37	890	1.3	62.0	0.70	1.9	0.00158	17		
Y2-802-6	0.55		1.79	65.0	0.72		0.0021	19		
Y2-90S-6	0.75	910	2.26	69.0	0.72	—	0.0029	23		
Y2-90L-6	1.1		3.14	72.0	0.73	—	0.0035	25		
Y2-100L-6	1.5	940	3.95	76.0	0.75	2.0	0.0069	33		
Y2-112M-6	2.2		5.57	79.0			0.0138	45		
Y2-132S-6	3.0	960	7.41	81.0	0.76	—	0.0286	63		
Y2-132M1-6	4.0		9.64	82.0		2.1	0.0357	73		
Y2-132M2-6	5.5	970	12.93	84.0	0.77	—	0.0449	84		
Y2-160M-6	7.5		17.0	86.0	0.77	2.0	0.0881	119		
Y2-160L-6	11	970	24.23	87.5	0.78	—	0.116	147		
Y2-180L-6	15		31.63	89.0			0.207	195		
Y2-200L1-6	18.5	970	38.1	90.0	0.81	—	0.315	220		
Y2-200L2-6	22		44.52	90.0	0.83	2.1	0.360	250		
Y2-225M1-6	30	980	58.63	91.5	0.84	—	0.547	292		
Y2-250M1-6	37		71.08	92.0		2.0	0.834	408		
Y2-280S-6	45	980	85.98	92.5		2.1	1.39	536		
Y2-280M1-6	55		104.75	92.8	0.86	—	1.65	595		
Y2-315S-6	75	990	141.77	93.5		—	4.11	990		
Y2-315M1-6	90		169.58	93.8		2.0	4.28	1080		
Y2-315L1-6	110	990	206.83	94.0	0.87	—	5.45	1150		
Y2-315L2-6	132		244.82	94.2		—	6.12	1210		
Y2-355M11-6	160	990	291.52	94.5	0.88	—	8.85	1600		
Y2-355M2-6	200		363.64	94.7		1.9	9.55	1700		
Y2-355L-6	250	990	453.60	94.9		—	10.63	1800		

型号 Type	额定功率 Rated power/kW	满载时 Full load			堵转电流 Blocked current	堵转转矩 Blocked torque	最大转矩 Max torque	转动惯量 Moment of inertia	净重 Weight
		转速 Speed / (r/min)	电流 Current / A	效率 Eff (%)					
同步转速 750r/min 8 极 Synchronous Speed 750r/min 8P									
Y2-801-8	0.18	630	0.88	51.0	3.3	1.9	0.00158	17	
Y2-802-8	0.25	640	1.15	54.0	3.3	1.9	0.0021	19	
Y2-90S-8	0.37	660	1.49	62.0	4.0	1.8	0.0029	23	
Y2-90L-8	0.55	660	2.18	63.0	4.0	1.8	0.0035	25	
Y2-100L1-8	0.75	690	2.43	71.0	6.0	1.9	0.0069	33	
Y2-100L2-8	1.1	690	3.42	73.0	6.0	1.9	0.0107	38	
Y2-112M-8	1.5	680	4.47	75.0	5.0	2.0	0.0149	50	
Y2-132S-8	2.2	710	6.04	78.0	0.71	2.0	0.0314	63	
Y2-132M-8	3.0	710	7.9	79.0	0.73	2.0	0.0395	79	
Y2-160M1-8	4.0	720	10.28	81.0	0.73	1.9	0.0753	118	
Y2-160M2-8	5.5	720	13.61	83.0	0.74	2.0	0.0931	119	
Y2-160L-8	7.5	730	17.88	85.5	0.75	2.0	0.126	145	
Y2-180L-8	11	730	25.29	87.5	0.76	2.0	0.203	184	
Y2-200L-8	15	730	34.09	88.0	0.76	2.0	0.339	250	
Y2-225S-8	18.5	730	40.58	90.0	0.78	2.0	0.491	266	
Y2-225M-8	22	730	47.37	90.5	0.78	2.0	0.547	282	
Y2-250M-8	30	740	63.43	91.0	6.6	1.9	0.834	405	
Y2-280S-8	37	740	76.83	91.5	0.79	1.8	1.39	520	
Y2-280M-8	45	740	92.93	92.0	6.6	1.8	1.65	582	
Y2-315S-8	55	740	112.97	92.8	0.81	1.8	4.79	1000	
Y2-315M-8	75	740	151.33	93.0	0.81	1.8	5.58	1100	
Y2-315L1-8	90	740	177.86	93.8	0.82	1.8	6.37	1160	
Y2-315L2-8	110	740	216.92	94.0	0.82	1.8	7.23	1230	
Y2-355M1-8	132	740	260.3	93.7	6.4	1.8	10.55	1600	
Y2-355M2-8	160	740	310.07	94.2	6.4	1.8	11.73	1700	
Y2-355L-8	200	740	386.36	94.5	6.4	1.8	12.86	1800	
同步转速 600r/min 10 极 Synchronous Speed 600r/min 10P									
Y2-315S-10	45	590	99.67	91.5	0.75	2.0	4.79	810	
Y2-315M-10	55	590	121.16	92.0	0.75	2.0	6.37	930	
Y2-315L1-10	75	590	162.16	92.5	0.76	2.0	7.0	1045	
Y2-315L2-10	90	590	191.03	93.0	0.77	2.0	7.15	1115	
Y2-355M1-10	110	590	230	93.2	0.78	2.0	12.55	1500	
Y2-355M2-10	132	590	275.11	93.5	0.78	2.0	13.75	1600	
Y2-355L-10	160	590	333.47	93.5	0.78	2.0	14.86	1700	



机座号63-200

机座号225-280

Y2 系列电机外形及安装尺寸 Dimensions of Y2 Series Motors

机座号 Frame size	安装尺寸及外形尺寸 Mounting Dimensions																
	D		E		FxGD		G	M	N	P	S	T	AC	AD	LA	HF	L1
	2P	4-10P	2P	4-10P	2P	4-10P	2P	4-10P	2P	4-10P	2P	4-10P	2P	4-10P	2P	4-10P	2P
63M	11	23	4X4	8.5	115	95	140	10	3	130	70	10	130	207			
71M	14	30	5X5	11	130	110	160	10	3.5	145	80	10	145	225			
80M	19	40	6X6	15.5	165	130	200	12	3.5	175	145	12	185	255			
90S	24	50	8X7	20	200	165	200	12	3.5	195	155	12	195	270			
90L	24	50	8X7	20	200	165	200	12	3.5	195	155	12	195	295			
100L	28	60	8X7	24	215	180	250	15	4	215	180	14	245	325			
112M	28	60	8X7	24	215	180	250	15	4	240	190	14	265	340			
132S	38	80	10X8	33	265	230	300	15	4	275	210	14	315	390			
132M	38	80	10X8	33	265	230	300	15	4	275	210	14	315	430			
160M	42	80	12X8	37	300	250	350	15	4	330	255	16	385	505			
160L	42	80	12X8	37	300	250	350	15	4	330	255	16	385	560			
180M	48	110	14X9	42.5	300	250	350	15	4	380	280	18	430	590			
180L	48	110	14X9	42.5	300	250	350	15	4	380	280	18	430	630			
200L	55	140	16X10	49	350	300	400	19	5	420	305	18	480	660			
225S	60	140	16X10	53	400	350	450	19	5	470	335	20	535	675			
225M	55	110	14X9	49	350	300	400	19	5	470	335	20	535	705			
250M	60	140	16X10	53	400	350	450	19	5	510	370	22	595	770			
280S	65	140	16X10	58	450	400	500	19	5	580	410	22	650	845			
280M	65	140	16X10	58	450	400	500	19	5	580	410	22	650	895			
315S	65	140	170	58	600	550	660	24	6	645	530	25	845	1020			
315M	65	140	170	58	600	550	660	24	6	645	530	25	845	1100			
315L1	65	140	170	58	600	550	660	24	6	645	530	25	845	1050			
315L2	65	140	170	58	600	550	660	24	6	645	530	25	845	1130			

附录 B

YEJ 系列电机安装及外形尺寸 **Dimensions of YEJ Series Motors**

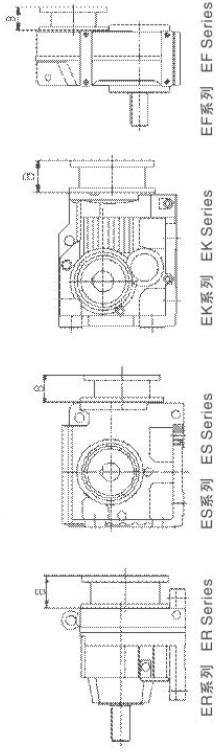
机座号 Frame size	80	90S	90L	100L	112M	132S	132M	160M	160L	180M	180L	200L	225S	225M
L1	350	370	395	420	450	505	545	610	655	715	765	790	860	890

注:图形参照附录 A,其它尺寸同 Y2 系列电机。

Note: See appendix A for dimensional drawings. Other dimensions are same as Y2 motors.

附录 D

Appendix D



ER 系列 ER Series

ES 系列 ES Series

EK 系列 EK Series

EF 系列 EF Series

附录 C

Appendix C

E... 系列减速电机最大输出转矩表

Max. Output Torque Table, E... type Geared Motors

ERX 系列 ERX Type

机座号 Type size	ERX57	ERX67	ERX77	ERX87	ERX97	ERX107	ERX137
最大输出转矩 Max. output torque (Nm)	70	135	215	400	600	830	1500

ER 系列 ER Type

机座号 Type size	ER..17	ER..27	ER..37	ER..47	ER..57	ER..67	ER..77	ER..87	ER..97	ER..107	ER..137	ER..147	ER..167	ER..177
最大输出转矩 Max. output torque (Nm)	85	130	200	300	450	600	820	1550	3000	4300	8000	13000	18000	36600

ES 系列 ES Type

机座号 Type size	ES..37	ES..47	ES..57	ES..67	ES..77	ES..87	ES..97	ES..100
最大输出转矩 Max. output torque (Nm)	67	170	300	520	1220	2300	4000	6500

EK 系列 EK Type

机座号 Type size	EK..37	EK..47	EK..57	EK..67	EK..77	EK..87	EK..97	EK..107	EK..127	EK..157	EK..167	EK..187
最大输出转矩 Max. output torque (Nm)	200	400	600	820	1550	2700	4300	8000	13000	18000	32000	50000

EF 系列 EF Type

机座号 Type size	EF..37	EF..47	EF..57	EF..67	EF..77	EF..87	EF..97	EF..107	EF..127	EF..157
最大输出转矩 Max. output torque (Nm)	200	400	600	820	1550	2700	4300	8000	13000	18000

注:表中所列减速电机最大输出转矩。实际上,同一规格的减速电机在不同传动比时,其最大承载转矩有可能不同,必要时,此值可按“选型参数表”中的输出转矩 M_a 乘以使用系数 K_a 求得。瞬时过载能力可达最大转矩的 1.8 倍。

Note: List data is gearmotor's max. output torque. In fact, the torque see selection table, the value equal the rate torque and service factor product. On request, please contact us.

法兰尺寸 B 的连接 Y 或 Y2 标准电机

ER 系列 ER Series

电机	63	71	80	90	100	112	132	160	180	200	225	250	280	315
ER...17/27/37	45	50.5	60.5	60.5	85.5									
ER...47/57/67	44.5	50	69	69	81	81	93							
ER...77/ERX77	44.5	50	70	70	75	75	96.5	125						
ER...87/ERX87			70	70	82	82	92	130	130					
ER...97/ERX97			65	65	81.5	81.5	92	125	125	152				
ER...107/ERX107					68	68	106	126	126	140	170			
ER...137/ERX137							106	127	127	140	170	192.5	192.5	
ER...147								120	120	139	169	192.5	192.5	260
ER...167/177								115	115	160	170	192.5	192.5	260
ERX...57/67	44.5	50	69	69	81	81	93							

ES 系列 ES Series

电机	63	71	80	90	100	112	132	160	180	200
ES...37/47/57	45	50.5	60.5	60.5	85.5					
ES...67	44.5	50	69	69	81	81	93			
ES...77	44.5	50	70	70	75	75	96.5	125		
ES...87			70	70	82	82	92	130	130	
ES...97			65	65	81.5	81.5	92	125	125	140
ES...100					68	68	106	126	126	140

EK 系列 EK Series

电机	63	71	80	90	100	112	132	160	180	200	225	250	280	315
EK...37	45	50.5	60.5	60.5	85.5									
EK...47/57/67	44.5	50	69	69	81	81	93							
EK...77	44.5	50	70	70	75	75	96.5	125						
EK...87			70	70	82	82	92	130	130					
EK...97			65	65	81.5	81.5	92	125	125	152				
EK...107					68	68	106	126	126	140	170			
EK...127							98.5	120	120	139	169	192.5	192.5	260
EK...157/167/187							115	115	160	170	192.5	192.5	260	

EF 系列 EF Series

电机	63	71	80	90	100	112	132	160	180	200	225	250	280	315
EF...37/47	45	50.5	60.5	60.5	85.5									
EF...57/67	44.5	50	69	69	81	81	93							
EF...77	44.5	50	70	70	75	75	96.5	125						
EF...87			70	70	82	82	92	130	130					
EF...97			65	65	81.5	81.5	92	125	125	152				
EF...107					68	68	106	126	126	140	170			
EF...127							98.5	120	120	139	169	192.5	192.5	260
EF...157							115	115	160	170	192.5	192.5	260	